

2026

GAMI

GLOBALAMI CONGRESS

SSL-AP

STENT - SAVE A LIFE! ASIA PACIFIC

SCAI-Asia

SOCIETY FOR CARDIOVASCULAR ANGIOGRAPHY & INTERVENTIONS-ASIA

TAMIS

TAMIS INTERNATIONAL CONGRESS

7-8 | **MARCH**

📍 NTUH International Convention Center, Taipei, Taiwan



台灣心肌梗塞學會
Taiwan Myocardial Infarction Society



SCAI
Society for Cardiovascular
Angiography & Interventions

Lesion Preparation

NSE Alpha™

Scoring Balloon for challenging lesions

衛部醫器輸字第031524號

INDICATIONS

- B**ifurcated lesion
- I**SR lesion
- S**mall vessel dilatation
- H**ard plaque
- O**stial lesion
- P**reparation



SeQuent® Please NEO

Next generation coronary Drug Coated Balloon

衛部醫器輸字第021383號



20+ Years of Clinical Experience

Scan for more clinical trials information of SeQuent® Please NEO

Treatment

Polymer free

Stent strut thickness of only 55/65µm



Coroflex® ISAR NEO

Stent based Polymer-free Drug Delivery

衛部醫器輸字第028763號

B | BRAUN
SHARING EXPERTISE

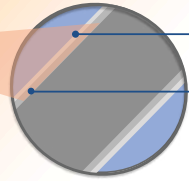
台灣柏朗股份有限公司
台北市松山區健康路152號9樓

DYNAMX

Coronary Bioadaptor System



Uncaging Element



PLGA + Novolimus
bioresorbable top coat (~3µm)

PLLA-based bioresorbable
base coat (~6µm)

Strut Material

Cobalt-Chromium L-605

Strut Thickness

71 µm

Unique Value of DynamX



Restores positive
adaptive remodeling



Restores vessel
function



Restores vessel
dynamic compliance



Landmark BIOADAPTOR RCT

1.8%

Primary endpoint:
TLF at 12 months vs. 2.8% for
Resolute Onyx™ (p < 0.001)

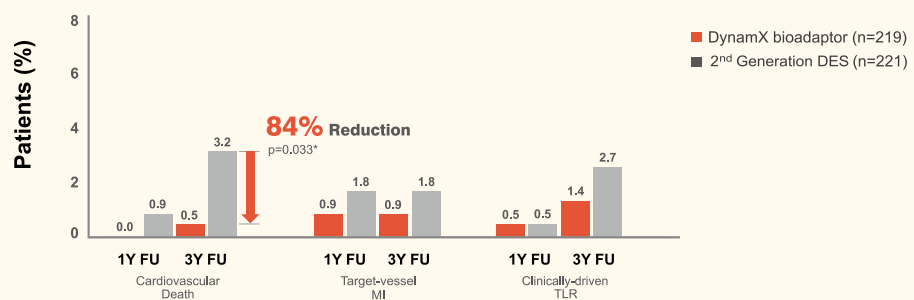
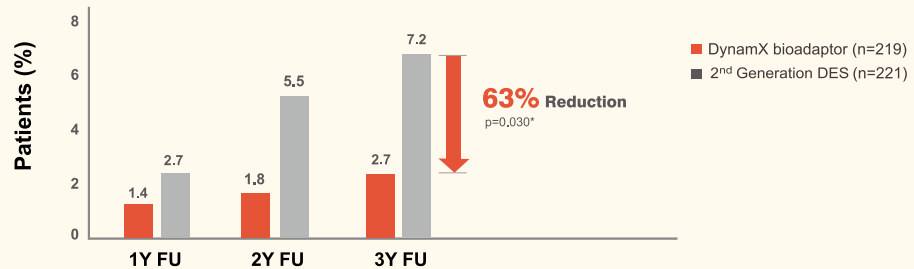
16%

Increase in blood flow
with every heartbeat, as
pulsatility returns

-9%

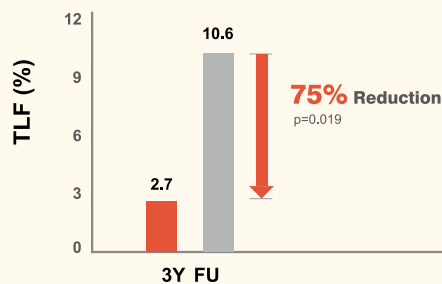
Plaque volume regression
in lipid rich lesions vs.
+10% for DES (p = 0.008)

Sustained low TLF outcomes



*Chi-square test for p values. Per protocol analysis. Events adjudicated per the ARC-2 Criteria. Percentages indicate patients who had an event through the 1095±100 days follow up window.

Significant Treatment Effect in LAD



2027

APAC

Asia Primary Angioplasty Congress

GAMI

Global AMI Congress

SSL-AP

Stent - Save a Life! Asia Pacific

SCAI-Asia

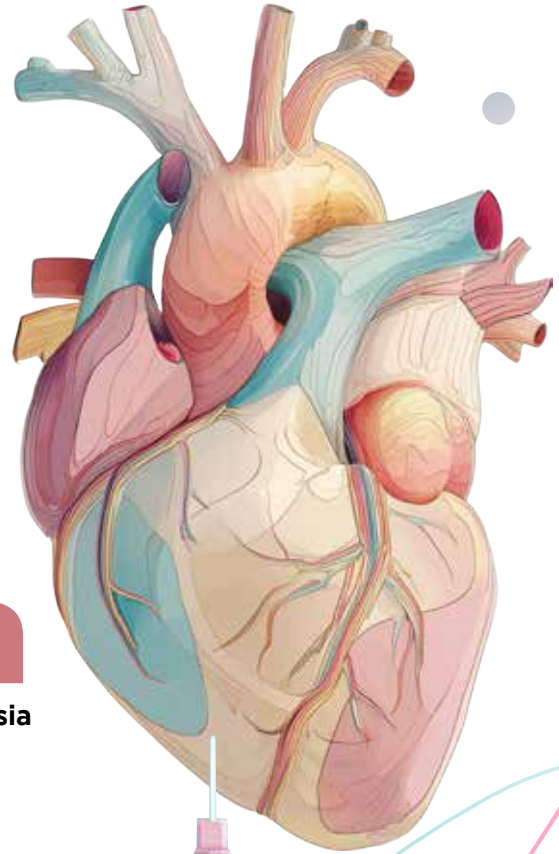
Society for Cardiovascular Angiography & Interventions-Asia

TAMIS

TAMIS International Congress

20-21 | Feb

 NTUH International Convention Center, Taipei, Taiwan



SAVE THE DATE

Contents

2	Welcome Message by the President
3	Welcome Message by the Chairman
4	Organizing Committee
5	Collaborative Organization
6	International Faculty
8	Domestic Faculty
15	Distinguished Guests of the Opening Remarks
16	Congress Information
17	Floor Plan
18	Program at a Glance
20	Program of STEMI Hall 201
20	STENT-SAVE A LIFE Session
22	TAMIS-SCAI Joint Session
24	TAMIS-GICS Joint Session
26	AHA-TAMIS Joint Forum: Chest Pain Centers
28	TAMIS-MIS-KOREA-JCR Joint Session
30	KAMIR-JAMIR-TAMIR Analysis Forum
32	TAMIS-APAC-SCAI Joint Session



Contents

34 Program of NSTEMI Hall 202

34 Precision Medicine Forum: Unlocking Personalized Triple High Car

36 SCAI & TAMIS MOU Signing Ceremony

38 Future Care Forum: Digital Tech & Regenerative Medicine
Imaging Forum: From ER to Post-Op

40 Imaging Forum: From ER to Post Acute Care

42 Pre-Hospital Forum

44 Program of ACS Hall 203

44 Guidelines for Acute Post-Impact Care (PAC) of Myocardial Infarction
Released(1)

46 Guidelines for Acute Post-Impact Care (PAC) of Myocardial Infarction
Released(2)

48 Drug Forum: Beyond Statins: The Next Frontier in Lipid Management

50 AMI Case Management and Care Quality Forum

52 Vaccines & Smoking Cessation: Emerging Insights

54 POCUS Workshop

56 KAMIR-JAMIR-TAMIR Closed-Door Meeting

Contents

58	Program of ACS Hall 203
58	AMI Best Case Competition
60	Catheter & Image
62	Antiplatelet Therapy & Challenges (Sanofi)
64	The Latest Challenges in Lipid Treatment (AstraZeneca)
66	Surgical & MCS
68	STENT-SAVE A LIFE: ROUND TABLE DISCUSSION
70	Heart Failure Case Discussion: From ER Room to Ward
72	Heart Care Award
76	Who is the King of AMI Knowledge?
77	TAMIS Got Talent!
85	Sponsors



Welcome Message by the President

Esteemed Colleagues and Friends,



It is a profound honor to welcome you to the 2026 GAMI / SSL-AP / SCAI-Asia / TAMIS International Congress, held from March 7th to 8th at the NTUH International Convention Center in the heart of Taipei. This year's gathering marks a historic milestone as we unite the collective expertise of TAMIS, SSL-AP, and SCAI-Asia. This powerful synergy of international organizations underscores our shared resolve to transcend geographical boundaries and redefine the standards of cardiovascular excellence on a truly global scale.

Our theme for this year, «Global Horizons in AMI: Innovation, Precision, and the Future of Care,» serves as a visionary compass for our discussions. In an era of rapid transformation, we are moving beyond traditional boundaries toward a future where «Precision in Every Pulse» is no longer an ideal, but a clinical reality. We will explore how the convergence of AI-driven diagnostics, digital twin technology, and wearable innovations is creating a more personalized and precise landscape for AMI treatment, extending care from the high-tech hospital environment directly into the patient's home through evolving «hospital-at-home» and ESG-conscious healthcare models.

Taipei, a city where centuries-old traditions meet the pulse of future technology, provides the perfect backdrop for such an ambitious dialogue. From the iconic silhouette of Taipei 101 to the hidden gems of its bustling night markets and serene historic temples, Taipei offers a unique sensory journey. We encourage you to immerse yourself in the city's renowned hospitality and vibrant culinary scene, which reflect the same spirit of innovation and warmth that we bring to our scientific community.

As we gather at the NTUH International Convention Center—a hub of medical heritage and academic prestige—I invite you to engage deeply with one another. Let us utilize this grand stage to foster the collaborations that will shape the next decade of cardiovascular care.

Welcome to Taipei, and welcome to a transformative 2026 Congress!

Sincerely,

Chun-Yao Huang

Dr. Chun-Yao Huang

President, TAIwan Myocardial Infarction Society (TAMIS)

Welcome Message by the Chairman

Dear Colleagues and Friends,

On behalf of the academic committee, it is a privilege to welcome you to the 2026 GAMI / SSL-AP / SCAI-Asia / TAMIS International Congress at the NTUH International Convention Center this March 7th to 8th. As we gather in the historic and vibrant heart of Taipei, we celebrate a powerful alliance between TAMIS, SSL-AP, and SCAI-Asia—a collaboration dedicated to pushing the academic boundaries of cardiovascular medicine.



This year's theme, «Global Horizons in AMI: Innovation, Precision, and the Future of Care,» is woven into every aspect of our scientific program. We are transitioning into an era where «Precision in Every Pulse» is driven by actionable data and technological integration. Our sessions are specifically designed to bridge the gap between innovation and clinical practice, highlighting the transformative power of AI-enabled ECG for early detection, the predictive role of digital twins, and the implementation of wearable devices in post-acute care (PAC). By exploring these advancements alongside the «hospital-at-home» model and ESG initiatives, we aim to provide a comprehensive roadmap for the future of AMI treatment.

Beyond the lectures, the congress features high-energy academic arenas such as the «Who is the King of AMI Knowledge?» and «The Ultimate Brain Challenge.» These activities are not merely competitions but are designed to test the limits of our clinical acumen and foster a spirit of excellence through interactive learning. These challenges, combined with our Call for Abstracts and Cases, ensure that the next generation of researchers and practitioners has a platform to shine on a global stage.

Taipei, with its seamless blend of cutting-edge innovation and warm tradition, provides the ideal environment for this intellectual exchange. I encourage you to fully immerse yourselves in these sessions, challenge the status quo, and contribute to the collective progress of our field.

Let us work together to translate today's innovations into tomorrow's standards of care.

Best regards,

Cheng-Hsueh Wu

Dr. Cheng-Hsueh Wu

Academic Chairman, TAIwan Myocardial Infarction Society (TAMIS)



Organizing Committee

President

Chun-Yao HUANG

Honorary President

Wei-Chun HUANG

Course Directors

Chun-Yao HUANG
Yu-Chen WANG

Wei-Chun HUANG
Jan PIEK

Cheng-Hsueh WU
Thomas ALEXANDER

Chun-Hung SU

Academic Committee

Director

Cheng-Hsueh WU

Deputy Director

Chun-Hung SU

Director & Supervisor

Yu-Chih CHEN
Po-Hsun HUANG
Chi-Hung HUANG

Committeeman

Po-Chun LEE
Wei-Cheng LIN
Tien-Ping TSAO
Jong-Shiuan YEH

Shih Wei MENG
Chun-Chin CHANG
Chih-Neng HSU
Hsiao-Yang CHENG

Po-Lin LIN
Chen-Rong TSAO
Ke-Wei CHEN
Szu-Chi CHIEN
Chen-Hsu WANG

Preparatory Committee

Secretary General

Yu-Chen WANG

Deputy Secretary General

Chun-Yuan CHU
Chien-Yi HSU

Ke-Wei CHEN
Wei-Shin LIU
Ying-Chang TUNG

Quit Smoking Committee
Pre-Hospital Ambulance Committee
Educational Committee
Research Committee

Rehabilitation Committee
Surgical Committee
Nursing Care Committee
Editing Committee

Collaborative Organization

International Collaborative Organization



STENT – SAVE A LIFE ASIA PACIFIC



SCAI
Society for Cardiovascular
Angiography & Interventions

Society for Cardiovascular Angiography & Interventions - Asia

Domestic Collaborative Organization



Taiwan Society of Lipids & Atherosclerosis (TSLA)



台灣心肺復健醫學會
Taiwan Academy of Cardiovascular and Pulmonary Rehabilitation (TACVPR)

Taiwan Academy of Cardiovascular and Pulmonary Rehabilitation
(TACVPR)



International Faculty

(In Alphabetical Order of Last Name)

Satoshi HONDA Japan

Satoshi YASUDA Japan

Takashi KAJIYA Japan

Yuji IKARI Japan

Binay Kumar RAUNIYAR Nepal

Dafsah Arifa JUZAR Indonesia

Firandi SAPUTRA Indonesia

Indra PRASETYA Indonesia

Imron SUBHAN India

Thomas ALEXANDER India

Amy TAM USA (AHA)

Sanah CHRISTOPHER USA (SCAI)

Sandeep NATHAN USA (SCAI)

Kwan S. LEE USA (SCAI)

Kin-Lam TSUI Hong Kong

Li-Wah TAM Hong Kong

Michael LEE Hong Kong

International Faculty

(In Alphabetical Order of Last Name)

Wasan UDAYACHALERM	Thailand
Simon LO	Malaysia
Jose Nicolas CRUZ	Philippines
Ryan BUENDIA	Philippines
Quang Ngoc NGUYEN	Vietnam
Hee Hwa HO	Singapore
Jack TAN	Singapore
Paul ONG	Singapore
Eun-Seok SHIN	South Korea
Jae Hyoung PARK	South Korea
Myung Ho JEONG	South Korea
Sang Yeub LEE	South Korea
Soonjun HONG	South Korea
Weon KIM	South Korea
Yongcheol KIM	South Korea
Youngkeun AHN	South Korea



Domestic Faculty

(In Alphabetical Order of Last Name)

詹超舜	Chao-Shun CHAN	Taipei Medical University Hospital,Taiwan
張嘉修	Chia-Hsiu CHANG	Cathay General Hospital,Taiwan
張喬翔	Chiao-Hsiang CHANG	Tri-Service General Hospital,Taiwan
張俊欽	Chun-Chin CHANG	Taipei Veterans General Hospital,Taiwan
張皓智	Hao-Chih CHANG	Taipei Veterans General Hospital,Taiwan
張鴻猷	Hung-Yu CHANG	Cheng Hsin Hospital,Taiwan
張詩聖	Shih-Sheng CHANG	China Medical University Hospital,Taiwan
張瑋婷	Wei-Ting CHANG	Chi Mei Medical Center,Taiwan
張藝耀	Yi-Yao CHANG	Far Eastern Memorial Hospital,Taiwan
趙君傑	Chun-Chieh CHAO	Taipei Medical University Hospital,Taiwan
陳玠宇	Chieh-Yu CHEN	Cathay General Hospital,Taiwan
陳建志	Chien-Chih CHEN	Kaohsiung Chang Gung Memorial Hospital,Taiwan
陳俊兆	Chun-Chao CHEN	Taipei Medical University-Shuang Ho Hospital, Ministry of Health and Welfare
陳相堯	Hsiang-Yao CHEN	Taipei Hospital, MOHW,Taiwan
陳科維	Ke-Wei CHEN	China Medical University Hospital,Taiwan
陳立威	Li-Wei CHEN	New Taipei City Hospital
陳柏偉	Po-Wei CHEN	National Cheng Kung University Hospital,Taiwan
陳思睿	Si-Rui CHEN	Chung Shan Medical University Hospital,Taiwan
陳大隆	Ta-Lung CHEN	China Medical University Hospital,Taiwan
陳天心	Tien-Hsin CHEN	Keelung Chang-Geng Memorial Hospital,Taiwan
陳盈如	Ying-Ju CHEN	Taipei Veterans General Hospital,Taiwan
陳雍欣	Yong-Xin CHEN	Cheng Hsin General Hospital,Taiwan
陳政瑋	Zheng-Wei CHEN	National Taiwan University Hospital Yunlin Branch,Taiwan
鄭安芸	An-Yun CHENG	Tri-Service General Hospital,Taiwan
鄭淇文	Chi-Wen CHENG	Keelung Chang Gung Memorial Hospital,Taiwan
鄭曉揚	Hsiao-Yang CHENG	Taitung MacKay Memorial Hospital,Taiwan
鄭慧娟	Hui-Chuan CHENG	Taipei Veterans General Hospital,Taiwan
鄭凱鴻	Kai-Hung CHENG	Kao Ho Hospital
鄭書孟	Shu-Meng CHENG	Tri-Service General Hospital,Taiwan
鄭英男	Ying-Nan CHENG	China Medical University Hospital,Taiwan

Domestic Faculty

(In Alphabetical Order of Last Name)

鄭宇倫	Yu-Lun CHENG	Taipei Medical University Hospital,Taiwan
鄭媛元	Yuan-Yuan CHENG	Academia Sinica
江承鴻	Cheng-Hung CHIANG	Kaohsiung Veterans General Hospital,Taiwan
江婉婷	Wan-Ting CHIANG	Taipei Medical University-Shuang Ho Hospital, Ministry of Health and Welfare
簡世杰	Shih-Chieh CHIEN	MacKay Memorial Hospital,Taiwan
簡思齊	Szu-Chi CHIEN	Changhua Christian Hospital,Taiwan
邱寬饒	Kuan-Rau CHIOU	Taipei Medical University-Shuang Ho Hospital, Ministry of Health and Welfare
邱淳志	Chun-Chih CHIU	Taipei Medical University-Shuang Ho Hospital, Ministry of Health and Welfare
邱富群	Fu-Chun CHIU	National Taiwan University Hospital Yunlin Branch,Taiwan
周柏青	Po-Ching CHOU	Cathay General Hospital,Taiwan
朱志生	Chih-Sheng CHU	Kaohsiung Medical University Chung-Ho Memorial Hospital,Taiwan
朱俊源	Chun-Yuan CHU	Kaohsiung Medical University Chung-Ho Memorial Hospital,Taiwan
朱軒緯	Hsuan-We CHU	Chung Shan Medical University Hospital,Taiwan
莊心喬	Hsin-Chiao CHUANG	Far Eastern Memorial Hospital,Taiwan
莊曜聰	Yao-Chung CHUANG	Chung Shan Medical University Hospital,Taiwan
鍾承志	Cheng-Chih CHUNG	GOODSPRING CLINIC,Taiwan
馮文生	Wen-Sheng FENG	China Medical University Hospital,Taiwan
郭斐然	Fei-Ran GUO	National Taiwan University Hospital,Taiwan
郭淑柳	Shu-Liu GUO	Taipei Medical University Hospital,Taiwan
洪俊聲	Chon-Seng HONG	Chi Mei Medical Center,Taiwan
夏治平	Chih-Ping HSIA	Kuang Tien General Hospital,Taiwan
蕭卜源	Bu-Yuan HSIAO	Taipei Medical University Hospital,Taiwan
蕭鎮源	Chen-Yuan HSIAO	Taipei Medical University Hospital,Taiwan
蕭健皓	Chien-Hao HSIAO	Hualien Tzu Chi Hospital,Taiwan
蕭鵬卿	Peng-Ching HSIAO	Tri-Service General Hospital,Taiwan
謝金明	Chin-Ming HSIEH	Taipei City Fire Department, Taipei City Government
謝宜璋	I-Chang HSIEH	Linkou Chang-Geng Memorial Hospital,Taiwan



Domestic Faculty

(In Alphabetical Order of Last Name)

謝明哲	Ming-Jer HSIEH	Linkou Chang-Geng Memorial Hospital,Taiwan
謝慕揚	Mu-Yang HSIEH	National Taiwan University Hospital Hsin-Chu Branch,Taiwan
辛和宗	Ho-Tsung HSIN	Far Eastern Memorial Hospital,Taiwan
徐千彝	Chien-Yi HSU	Taipei Medical University Hospital,Taiwan
許智能	Chih-Neng HSU	National Taiwan University Hospital Yunlin Branch,Taiwan
許百豐	Pai-Feng HSU	Taipei Veterans General Hospital,Taiwan
許博順	Po-Shun HSU	Tri-Service General Hospital,Taiwan
許育誠	Yu-Cheng HSU	Lotung Poh-Ai Hospital,Taiwan
胡佳穎	Jia-Ying HU	Pingtung Christian Hospital,Taiwan
黃啟宏	Chi-Hung HUANG	Cathay General Hospital,Taiwan
黃祺耀	Chi-Yao HUANG	Taichung Veterans General Hospital,Taiwan
黃建銘	Chien-Ming HUANG	Cheng Hsin Hospital,Taiwan
黃建元	Chien-Yuan HUANG	Taipei Hospital, Ministry of Health and Welfare
黃金洲	Chin-Chou HUANG	Taipei Veterans General Hospital,Taiwan
黃竣暘	Chun-Yang HUANG	Taipei Veterans General Hospital,Taiwan
黃群耀	Chun-Yao HUANG	Taipei Medical University Hospital,Taiwan
黃潔宜	Jei-Yie HUANG	National Taiwan University Hospital,Taiwan
黃立民	Li-Min HUANG	National Taiwan University Children's Hospital,Taiwan
黃柏勳	Po-Hsun HUANG	Taipei Veterans General Hospital,Taiwan
黃睿慈	Ruei-Cih HUANG	Taipei Veterans General Hospital,Taiwan
黃少嵩	Shao-Sung HUANG	Taipei Veterans General Hospital,Taiwan
黃嵩堯	Song-Yao Huang	Taipei City Fire Department, Taipei City Government
黃嵩豪	Sung-Hao HUANG	National Yang Ming Chiao Tung University Hospital
黃偉杰	Wei-Chieh HUANG	Taipei Veterans General Hospital,Taiwan
黃偉春	Wei-Chun HUANG	Pingtung Christian Hospital,Taiwan
黃鈺茹	Yu-Lu HUANG	Cathay General Hospital,Taiwan
洪崇烈	Chung-Lieh HUNG	MacKay Memorial Hospital,Taiwan
洪士強	Shih-Chiang HUNG	Kaohsiung Chang-Geng Memorial Hospital,Taiwan
黃瑞仁	Juey-Jen HWANG	Fu Jen Catholic University Hospital,Taiwan
任昶龍	Hsu-Lung JEN	Cheng Hsin Hospital,Taiwan

Domestic Faculty

(In Alphabetical Order of Last Name)

鍾竣宇	Jyun-Yu JHONG	Taichung Veterans General Hospital,Taiwan
阮俊能	Chun-Neng JUAN	National Cheng Kung University Hospital,Taiwan
高宜如	I-JU KAO	Taipei Medical University Hospital,Taiwan
高瑜成	Yu-Cheng KAO	Cheng Hsin Hospital,Taiwan
柯呈諭	Cheng-Yu KO	National Cheng Kung University Hospital,Taiwan
郭文英	Wen-Ying KUO	Keelung Chang Gung Memorial Hospital,Taiwan
賴志泓	Chih-Hung LAI	Taichung Veterans General Hospital,Taiwan
藍偉仁	Wei-Ren LAN	MacKay Memorial Hospital,Taiwan
樂靜菀	Ching-Yuan LE	Taipei Medical University Shuang Ho Hospital, Ministry of Health and Welfare
李彬州	Bin-Chou LEE	Taipei City Hospital Zhongxiao Branch,Taiwan
李博仁	Bor-Jen LEE	Tung's Taichung MetroHarbor Hospital,Taiwan
李俊偉	Chun-Wei LEE	MacKay Memorial Hospital,Taiwan
李信賦	Hsin-Fu LEE	New Taipei City Tucheng Hospital,Taiwan
李道輿	Tao-Yu LEE	Kaohsiung Veterans General Hospital,Taiwan
李威杰	Wei-Chieh LEE	Chi Mei Medical Center,Taiwan
李友淳	Yu-Chun LEE	Taichung Veterans General Hospital,Taiwan
呂信邦	Hsin-Bang LEU	Taipei Veterans General Hospital,Taiwan
李虹慧	Hung-Hui LI	Taipei Medical University-Shuang Ho Hospital, Ministry of Health and Welfare
李美慧	Mei-Hui LI	Chi Mei Medical Center,Taiwan
李紹榕	Shao-Jung LI	Taipei Medical University-Shuang Ho Hospital, Ministry of Health and Welfare
梁馨月	Hsin-Yueh LIANG	China Medical University Hospital,Taiwan
林耕民	Gen-Min LIN	Hualien Armed Forces General Hospital,Taiwan
林慧美	Hui-Mei LIN	Taipei City Hospital, Renai Branch
林依屏	I-Ping LIN	Shin Kong Wu Huo-Shih Memorial Hospital,Taiwan
林俊呈	Jiunn-Cherng LIN	Taichung Veterans General Hospital,Taiwan
林俊彰	Jiunn-Wen LIN	Dalin Tzu Chi Hospital,Taiwan
林沛蓁	Jui-Chen LIN	Taipei Medical University-Shuang Ho Hospital, Ministry of Health and Welfare



Domestic Faculty

(In Alphabetical Order of Last Name)

林克隆	Ko-Lung LIN	Kaohsiung Medical University Chung-Ho Memorial Hospital,Taiwan
林秉毅	Ping-Yi LIN	Taoyuan General Hospital, Ministry of Health and Welfare,Taiwan
林柏志	Po-Chih LIN	National Taiwan University Hospital,Taiwan
林柏霖	Po-Lin LIN	Hsinchu Mackay Memorial Hospital,Taiwan
林韋丞	Wei-Cheng LIN	Yuan's General Hospital,Taiwan
林維文	Wei-Wen LIN	Taichung Veterans General Hospital,Taiwan
林彥良	Yen-Liang LIN	National Taiwan University Hospital Hsin-Chu Branch,Taiwan
林晏年	Yen-Nien LIN	China Medical University Hospital,Taiwan
劉俊廷	Jun-Ting LIOU	China Medical University Hsinchu Hospital,Taiwan
劉濟興	Chi-Hsing LIU	Taichung Veterans General Hospital,Taiwan
劉健佑	Chien-Yu LIU	China Medical University Hospital,Taiwan
劉怡凡	I-Fan LIU	Cheng Hsin Hospital,Taiwan
劉如濟	Ju-Chi LIU	Taipei Medical University-Shuang Ho Hospital, Ministry of Health and Welfare
劉彥廷	Patrick Yan-Tyng LIU	Taoyuan Min Sheng General Hospital,Taiwan
劉維新	Wei-Shin LIU	Hualien Tzu Chi Hospital,Taiwan
劉威廷	Wei-Ting LIU	Tri-Service General Hospital,Taiwan
劉彥宏	Yen-Hung LIU	Fire Bureau of Kaohsiung City Government
羅健賢	Chien-Hsien LO	Da Chien General Hospital,Taiwan
羅崇佑	Chugn-Yu LO	Taipei Tzu Chi Hospital, Buddhist Tzu Chi Medical Foundation
羅皓允	Hao-Yun LO	Shin Kong Wu Huo-Shih Memorial Hospital,Taiwan
呂孟穎	Meng-Ying LU	Mackay Memorial Hospital Taitung Branch,Taiwan
盧澤民	Tse-Min LU	Taipei Veterans General Hospital,Taiwan
盧怡旭	Ye-Hsu LU	Kaohsiung Municipal Siaogang Hospital,Taiwan
羅景齡	Jing-Ling LUO	Taoyuan Min Sheng General Hospital,Taiwan
羅明原	Ming-Yuan LUO	Show Chwan Memorial Hospital
孟士瑋	Shih-Wei MENG	National Taiwan University Hospital,Taiwan

Domestic Faculty

(In Alphabetical Order of Last Name)

潘建廷	Chien-Ting PAN	Taichung Municipal Geriatric and Rehabilitation General Hospital,Taiwan
沈靜芬	Ching-Fen SHEN	Health Promotion Administration, Ministry of Health and Welfare
施俊哲	Chun-Che SHIH	Taipei Medical University,Taiwan
施淳友	Chun-Yu SHIH	Taichung Veterans General Hospital,Taiwan
蘇峻弘	Chun-Hung SU	Chung Shan Medical University Hospital,Taiwan
蘇柏學	Po-Hsueh SU	Taichung Municipal Geriatric and Rehabilitation General Hospital,Taiwan
宋偉廷	Wei-Ting SUNG	Taipei Veterans General Hospital,Taiwan
丁嘉顧	CHIA-KU	Taipei City Fire Department, Taipei City Government
丁革新	Ke-Hsin TING	Yunlin Christian Hospital,Taiwan
蔡忠霖	Chung-Lin TSAI	Taichung Veterans General Hospital,Taiwan
蔡宗能	Tsung-Neng TSAI	Tri-Service General Hospital,Taiwan
蔡宜廷	YI-Ting TSAI	Tri-Service General Hospital,Taiwan
曹承榮	Chen-Rong TSAO	Fongyuan Hospital, MOHW,Taiwan
曹殿萍	Tien-Ping TSAO	Cheng Hsin Hospital,Taiwan
曹玉婷	Yu-Ting TSAO	National Taiwan University Hospital Bei-Hu Branch
杜宗明	Chung-Ming TU	Far Eastern Memorial Hospital,Taiwan
董穎璋	Ying-Chang TUNG	Linkou Chang-Gung Memorial Hospital,Taiwan
曾炳憲	Bing-Hsiean TZENG	Far Eastern Memorial Hospital,Taiwan
王朝平	Chao-Ping WANG	E-Da Cancer Hospital,Taiwan
王朝永	Chao-Yung WANG	Linkou Chang-Gung Memorial Hospital,Taiwan
王晨旭	Chen-Hsu WANG	Cathay General Hospital,Taiwan
王惠生	Hui-Sheng WANG	Hualien Tzu Chi Hospital,Taiwan
王懋衡	Mao-Heng WANG	SAINT PAUL'S Hospital,Taiwan
王大榮	Ta-Jung WANG	Taipei Medical University-Shuang Ho Hospital, Ministry of Health and Welfare
王咨驊	Tzu-Hua WANG	Taipei Municipal Wanfang Hospital, Taipei Medical University
王子林	Tzu-Lin WANG	Shin Kong Wu Huo-Shih Memorial Hospital,Taiwan
王怡智	Yi-Chih WANG	National Taiwan University Hospital,Taiwan



Domestic Faculty

(In Alphabetical Order of Last Name)

王英謙	Ying-Cian WANG	Changhua Christian Hospital,Taiwan
王宇澄	Yu-Chen WANG	Asia University Hospital,Taiwan
魏日華	Jih-Hua WEI	Taoyuan Min Sheng General Hospital,Taiwan
翁岱鈺	Tai-Yu WENG	Chung Shan Medical University Hospital,Taiwan
吳承學	Cheng-Hsueh WU	Taipei Veterans General Hospital,Taiwan
吳志成	Chih-Cheng WU	National Taiwan University Hospital Hsinchu Branch,Taiwan
吳卓錯	Cho-Kai WU	National Taiwan University Hospital,Taiwan
吳俊賢	Chun-Hsien WU	Tri-Service General Hospital,Taiwan
吳浩銘	Hao-Ming WU	Kaohsiung Armed Forces General Hospital,Taiwan
吳沛禧	Pei-His WU	Taipei Veterans General Hospital,Taiwan
吳彥雯	Yen-Wen WU	Far Eastern Memorial Hospital,Taiwan
吳懿哲	Yih-Jer WU	Mackay Memorial Hospital,Taiwan
楊紹祺	Shao-Chi YANG	National Taiwan University Hospital Yunlin Branch,Taiwan
楊宗霖	Tsung-Lin YANG	Taipei Medical University Hospital,Taiwan
楊文碩	Wen-Shuo YANG	Taipei City Fire Department
楊宜郡	YI-Chun YANG	Tung's Taichung MetroHarbor Hospital,Taiwan
楊淵博	Yuan-Po YANG	Changhua Christian Hospital,Taiwan
葉勳龍	Hseng-Long YEH	Xizhi Cathay General Hospital,Taiwan
葉宏一	Hung-I YEH	Mackay Memorial Hospital,Taiwan
余法昌	Fa-Chang YU	Mackay Memorial Hospital,Taiwan
尤垣傑	Yuan-Chieh YU	Taipei Veterans General Hospital,Taiwan
惲純和	Chun-Ho YUN	Mackay Memorial Hospital,Taiwan

Distinguished Guests of the Opening Remarks



Dr. Qun-Yao Huang
President of TAMIS



Dr. Wei-Chun Huang
Honorary President of TAMIS



Professor Kwan S. Lee
representing SCAI



Dr. Thomas Alexander
Chair of STENT-SAVE A LIFE India



Congress Information

Name 2026 GAMI / SSL-AP / SCAI-Asia / TAMIS International Congress

Date March 7-8, 2026

Venue NTUH International Convention Center, Taipei, Taiwan

Theme Global Horizons in AMI: Innovation, Precision, and the Future of Care

Organizer TAIwan Myocardial Infarction Society (TAMIS)

Website <http://www.gami.org.tw/>

Traffic Information



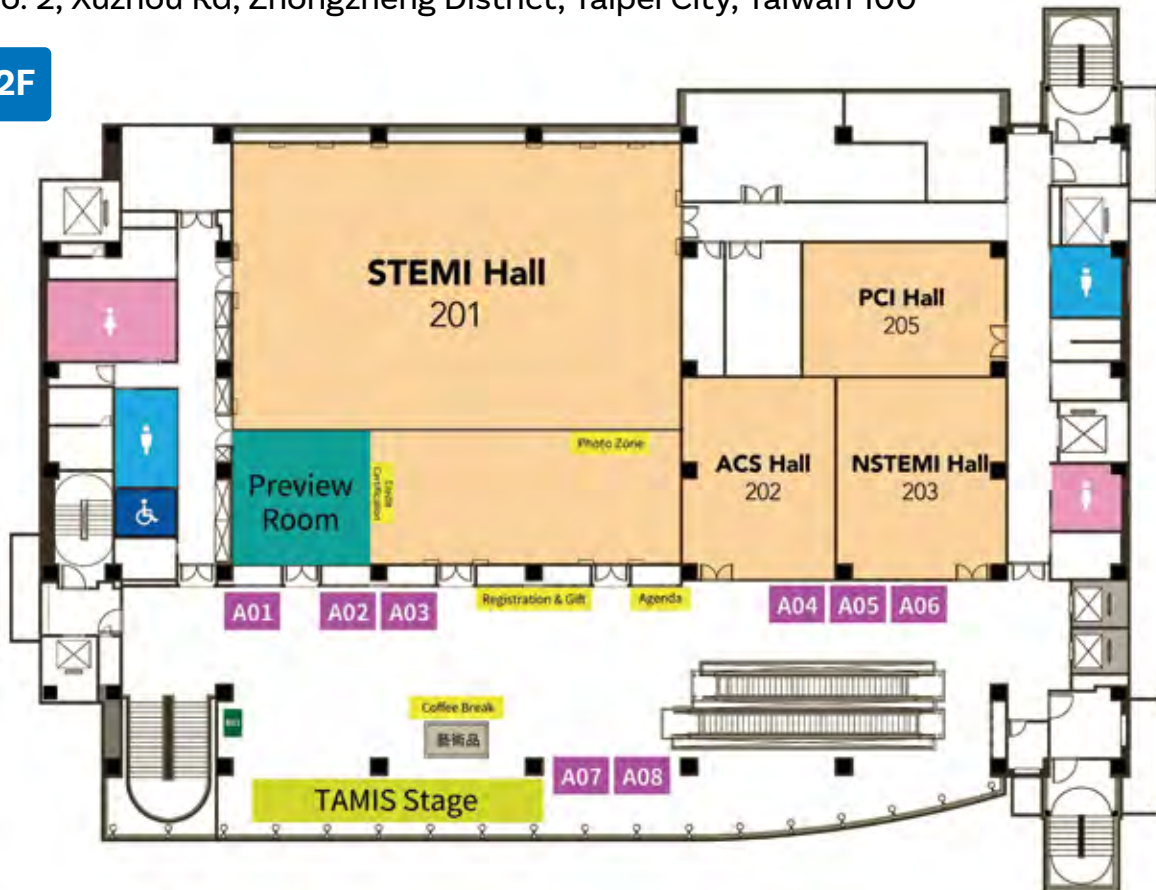
Floor Plan

Floor Plan

NTUH International Convention Center, Taipei, Taiwan

No. 2, Xuzhou Rd, Zhongzheng District, Taipei City, Taiwan 100

2F



Booth No. Company

A01	台灣卓爾醫療器材有限公司
A02	友霖生技醫藥股份有限公司
A03	台灣安進藥品有限公司
A04	台灣諾和諾德藥品股份有限公司
A05	台灣羅氏醫療診斷設備股份有限公司
A06	台灣百靈佳股格翰股份有限公司
A07	台灣第一三共股份有限公司
A08	賽諾菲股份有限公司
B01	ASUS



Program at a Glance

DAY 1				
📅 2026.MAR.7				
🕒 08:00-17:40				
	STEMI Hall (201)	NSTEMI Hall (202)	ACS (203)	PCI (205)
08:00-08:30	Registration			
08:30-09:40	STENT-SAVE A LIFE Session		Guidelines for Post-Acute Care (PAC) of Myocardial Infarction Released (1)	AMI Best Case Competition
09:40-10:10	Opening & GROUP PHOTO			
10:10-10:40	Break Time / Who is the King of AMI Knowledge?			
10:40-12:00	TAMIS-SCAI Joint Session	Unlocking Integrated Strategies for metabolic syndrome	Guidelines for Post-Acute Care (PAC) of Myocardial Infarction Released (2)	Catheter & Image
12:00-13:00	Scientific Symposium (Amgen)	Scientific Symposium (Daiichi Sankyo)	Scientific Symposium (Boehringer Ingelheim)	Scientific Symposium (Novartis)
13:00-14:00	TAMIS-GICS Joint Session	SCAI MOU	Drug Forum: Beyond Statins: The Next Frontier in Lipid Management	🍰☕ Antiplatelet Therapy & Challenges (Sanofi)
14:00-15:00	AHA-TAMIS Joint Forum: Chest Pain Centers	Future Care Forum: Digital Tech & Regenerative Medicine	AMI Case Management and Care Quality Forum	🍰☕ The Latest Challenges in Lipid Treatment (AstraZeneca)
15:00-15:20	Break Time			
15:20-16:40	TAMIS-MIS-KOREA-JCR Joint Session	Imaging Forum: From ER to Post Acute Care	15:20-17:00 Vaccines & Smoking Cessation: Emerging Insights	Surgical & MCS
16:40-17:40				STENT-SAVE A LIFE: Round Table Discussion

Program at a Glance

DAY 2 📅 2026.MAR.8 🕒 08:30-13:30				
	STEMI Hall (201)	NSTEMI Hall (202)	ACS (203)	PCI (205)
08:30-09:00	TAMIS Members' Meeting			
09:00-10:20	KAMIR-JAMIR-TAMIR Analysis Forum	Pre-Hospital Forum	POCUS Workshop	Heart Failure Case Discussion: From ER Room to Ward
10:20-10:40	Break Time			
TAMIS Got Talent!				
10:40-12:00	TAMIS-APAC- SCAI Joint Session		10:20-11:20 KAMIR-JAMIR-TAMIR Closed-Door Meeting	Heart Care Award
12:00-12:05	Closing Remarks			
12:05-13:00	Scientific Symposium (Novo Nordisk)	Scientific Symposium (Organon)		
13:00-13:30	Awards Ceremony			



Topic STEMI network

Date Saturday, March 07, 2026

Time 08:30-09:40 (GMT+8)

Chairs



Chun-Yao HUANG
(黃群耀)



Tien-Ping TSAO
(曹殿萍)



Thomas ALEXANDER
(India)



Yuji IKARI
(Japan)

Experts



Yi-Chih WANG
(王怡智)



Tien-Hsin CHEN
(陳天心)



Hsin-Fu LEE
(李信賦)



Firandi SAPUTRA
(Indonesia)



Imron SUBHAN
(India)

Speakers



Thomas ALEXANDER
(India)



Yu-Chen WANG
(王宇澄)



Li-Wah TAM
(Hong Kong)



Yuji IKARI
(Japan)



Dafsah Arifa JUZAR
(Indonesia)

Topic STEMI network**Date** Saturday, March 07, 2026 **Time** 08:30-09:40 (GMT+8)**Chair** Chun-Yao HUANG (黃群耀), Tien-Ping TSAO (曹殿萍), Thomas ALEXANDER (India), Yuji IKARI (Japan)**Experts** Yi-Chih WANG (王怡智), Tien-Hsin CHEN (陳天心), Hsin-Fu LEE (李信賦), Firandi SAPUTRA (Indonesia), Imron SUBHAN(India)

TIME	TOPIC	SPEAKER
08:30-08:40	Reperfusion Therapy for ST Elevation Myocardial Infarction in Low to Middle-Income Countries	Thomas ALEXANDER (India)
08:40-08:50	Continuous Care for Myocardial Infarction: Current Situation and Future in Taiwan	Yu-Chen WANG (王宇澄)
08:50-09:00	RealWorld Management of Acute Coronary Syndrome in Hong Kong: Insights from a MultiCentre Questionnaire Survey.	Li-Wah TAM (Hong Kong)
09:00-09:10	How to reduce primary PCI time? - SPEEDY PCI study	Yuji IKARI (Japan)
09:10-09:20	AMI in Indonesia	Dafsah Arifa JUZAR (Indonesia)
09:20-09:40	Discussion	



Topic Cardiogenic Shock, Challenge in AMI

Date Saturday, March 07, 2026

Time 10:40-12:00 (GMT+8)

Chairs



Chi-Hung HUANG
(黃啟宏)



Kwan S. LEE
(USA)



Jack TAN
(Singapore)

Experts



Cheng-Hung CHIANG
(江承鴻)



Chen-Hsu WANG
(王晨旭)



Tao-Yu LEE
(李道興)



Sang Yeub LEE
(Korea)



Quang Ngoc NGUYEN
(Vietnam)



Sanah CHRISTOPHER
(USA)

Speakers



Sandeep NATHAN
(USA)



Michael LEE
(Hong Kong)



Kwan S. LEE
(USA)



Wei-Ren LAN
(藍偉仁)



Chih-Hung LAI
(賴志泓)



Jack TAN
(Singapore)

Topic Cardiogenic Shock, Challenge in AMI**Date** Saturday, March 07, 2026 **Time** 10:40-12:00 (GMT+8)**Chair** Chi-Hung HUANG (黃啟宏), Kwan S. LEE (USA), Jack TAN (Singapore)**Experts** Cheng-Hung CHIANG (江承鴻), Chen-Hsu WANG (王晨旭), Tao-Yu LEE (李道興), Sang Yeub LEE (Korea), Quang Ngoc NGUYEN (Vietnam), Sanah CHRISTOPHER(USA)

TIME	TOPIC	SPEAKER
10:40-10:50	Protocol-driven care for AMI cardiogenic shock: Contemporary outcomes & future directions	Sandeep NATHAN (USA)
10:50-11:00	Update on Cardiogenic Shock management	Michael LEE (Hong Kong)
11:00-11:10	What we have learnt from DanGer Shock & ECLS Shock	Kwan S. LEE (USA)
11:10-11:20	How to build a Cardiogenic shock Program ?	Wei-Ren LAN (藍偉仁)
11:20-11:30	Impact of rt heart Catheterization on outcomes in Cardiogenic shock	Chih-Hung LAI (賴志泓)
11:30-11:40	Role of MCS support for CHIP: Fact or Myth?	Jack TAN (Singapore)
11:40-12:00	Discussion	



Date Saturday, March 07, 2026

Time 13:00-14:00 (GMT+8)

Chairs



Cheng-Hsueh WU
(吳承學)



Hsiao-Yang CHENG
(鄭曉揚)



Myung Ho JEONG
(Korea)



Weon KIM
(Korea)

Experts



Chun-Yuan CHU
(朱俊源)



Ying-Chang TUNG
(董穎璋)



Yu-Cheng KAO
(高瑜成)



Hao-Chih CHANG
(張皓智)



Satoshi HONDA
(Japan)

Speakers



Simon LO
(Malaysia)



Youngkeun AHN
(Korea)



Shih-Chieh CHIEN
(簡世杰)



Chia-Hsiu CHANG
(張嘉修)

Date Saturday, March 07, 2026 **Time** 13:00-14:00 (GMT+8)

Chair Cheng-Hsueh WU (吳承學), Hsiao-Yang CHENG (鄭曉揚), Myung Ho JEONG (Korea),
Weon KIM (Korea)

Experts Chun-Yuan CHU (朱俊源), Ying-Chang TUNG (董穎璋), Yu-Cheng KAO (高瑜成),
Hao-Chih CHANG (張皓智), Satoshi HONDA (Japan)

TIME	TOPIC	SPEAKER
13:00-13:10	SUCK”- Why it’s not wrong!	Simon LO (Malaysia)
13:10-13:20	Timing of complete revascularization in STEMI with multivessel disease	Youngkeun AHN (Korea)
13:20-13:30	Peripheral comorbidities and complications after ECMO assisted PCI: a case series	Shih-Chieh CHIEN (簡世杰)
13:30-13:40	Time Is Muscle – But What If It’s the Aorta?	Chia-Hsiu CHANG (張嘉修)
13:40-14:00	Discussion	



Topic Chest Pain Center

Date Saturday, March 07, 2026

Time 14:00-15:00 (GMT+8)

Chairs



Juey-Jen HWANG
(黃瑞仁)



I-Chang HSIEH
(謝宜璋)



Youngkeun AHN
(Korea)



Amy TAM
(USA)

Experts



Hao-Yun LO
(羅皓允)



Chih-Neng HSU
(許智能)



Chien-Yi HSU
(徐千彝)



Takashi KAJIYA
(Japan)



Jose Nicolas CRUZ
(Philippines)

Speakers



Amy TAM
(Hong Kong)



Imron SUBHAN
(India)



Wei-Chun HUANG
(黃偉春)

Topic Chest Pain Center**Date** Saturday, March 07, 2026 **Time** 14:00-15:00 (GMT+8)**Chair** Juey-Jen HWANG (黃瑞仁), I-Chang HSIEH (謝宜璋), Youngkeun AHN (Korea), Amy TAM(USA)**Experts** Hao-Yun LO (羅皓允), Chih-Neng HSU (許智能), Chien-Yi HSU (徐千彝), Takashi KAJIYA (Japan), Jose Nicolas CRUZ (Philippines)

TIME	TOPIC	SPEAKER
14:00-14:15	Introduction of AHA Comprehensive Chest Pain Center Certification Program	Amy TAM (USA)
14:15-14:30	Implementing AHA's Chest Pain & Stroke Clinical Pathways - An Indian Experience	Imron SUBHAN (India)
14:30-14:45	Taiwan JCT AMI certification system	Wei-Chun HUANG (黃偉春)
14:45-15:00	Discussion	



Date Saturday, March 07, 2026

Time 15:20-16:40 (GMT+8)

Chairs



Wei-Chun HUANG
(黃偉春)



Eun-Seok SHIN
(Korea)



Sandeep NATHAN
(USA)

Experts



Chih-Sheng CHU
(朱志生)



Chon-Seng HONG
(洪俊聲)



Chi-Wen CHENG
(鄭淇文)



Jae Hyung PARK
(Korea)



Kin-Lam TSUI
(Hong Kong)



Indra PRASETYA
(Indonesia)

Speakers



Firandi SAPUTRA
(Indonesia)



Eun-Seok SHIN
(Korea)



Takashi KAJIYA
(Japan)



Jiunn-Cherng LIN
(林俊呈)



Chun-Wei LEE
(李俊偉)



Yongcheol KIM
(Korea)

Date Saturday, March 07, 2026 **Time** 15:20-16:40 (GMT+8)

Chair Wei-Chun HUANG (黃偉春), Eun-Seok Shin (Korea), Sandeep NATHAN (USA)

Experts Chih-Sheng CHU (朱志生), Chon-Seng HONG (洪俊聲), Chi-Wen CHENG(鄭淇文),
Jae Hyoung PARK (Korea), Kin-Lam TSUI (Hong Kong), Indra PRASETYA (Indonesia)

TIME	TOPIC	SPEAKER
15:20-15:30	Pharmacoinvasive Strategy: Challenge of Implementation	Firandi SAPUTRA (Indonesia)
15:30-15:40	Beyond Stents Alone: The Synergistic Role of DES and DCB in AMI Management	Eun-Seok SHIN (Korea)
15:40-15:50	Calcified lesions in AMI	Takashi KAJIYA (Japan)
15:50-16:00	Beyond Obstructive CAD: The Importance of MINOCA in Contemporary ACS Care	Jiunn-Cherng LIN (林俊呈)
16:00-16:10	Beyond Angiography: Microvascular Injury Across the Spectrum of Acute MI	Chun-Wei LEE (李俊偉)
16:10-16:20	Out-of-Hospital Cardiac Arrest: How Should We Treat?	Yongcheol KIM (Korea)
16:20-16:40	Discussion	



Date Sunday, March 08, 2026

Time 09:00-10:20 (GMT+8)

Chairs



Yu-Chen WANG
(王宇澄)



Myung Ho JEONG
(Korea)



Satoshi YASUDA
(Japan)

Experts



Shu-Meng CHENG
(鄭書孟)



Chun-Chih CHIU
(邱淳志)



Shao-Chi YANG
(楊紹祺)



Cheng-Yu KO
(柯呈諭)



Yongcheol KIM
(Korea)

Speakers



Satoshi HONDA
(Japan)



Satoshi YASUDA
(Japan)



Myung Ho JEONG
(Korea)



Hung-Yu CHANG
(張鴻猷)

Date Sunday, March 08, 2026**Time** 09:00-10:20 (GMT+8)**Chair** Yu-Chen WANG (王宇澄), Myung HO Jeong (Korea), Satoshi YASUDA (Japan)**Experts** Shu-Meng CHENG (鄭書孟), Chun-Chih CHIU (邱淳志), Shao-Chi YANG (楊紹祺), Cheng-Yu KO (柯呈諭), Yongcheol KIM (Korea)

TIME	TOPIC	SPEAKER
09:00-09:12	Impact of Right Ventricular Involvement on Bleeding and Mortality in RCA related STEMI Undergoing PCI	Satoshi HONDA (Japan)
09:12-09:24	Key Differences in Acute Myocardial Infarction Management in East Asian Populations	Satoshi YASUDA (Japan)
09:24-09:36	Twenty-year experience of the KAMIR	Myung Ho JEONG (Korea)
09:36-09:50	Baseline Characteristics and Treatment Patterns in the Taiwan Acute Myocardial Infarction Registry	Hung-Yu CHANG (張鴻猷)
09:50-10:20	Discussion	



Date

Sunday, March 08, 2026

Time

10:40-12:00 (GMT+8)

Chairs



Chen-Rong TSAO
(曹承榮)



Paul ONG
(Singapore)



Hee Hwa HO
(Singapore)

Experts



Chun-Hung SU
(蘇峻弘)



Ke-Wei CHEN
(陳科維)



Wei-Chieh HUANG
(黃偉杰)



Wei-Chieh LEE
(李威杰)



Kin-Lam TSUI
(Hong Kong)



Dafsah Arifa JUZAR
(Indonesia)

Speakers



Shih-Sheng CHANG
(張詩聖)



Kwan S. LEE
(USA)



Soonjun HONG
(Korea)



Indra PRASETYA
(Indonesia)



Hee Hwa HO
(Singapore)

Date Sunday, March 08, 2026 **Time** 10:40-12:00 (GMT+8)

Chair Chen-Rong TSAO (曹承榮), Paul ONG (Singapore), Hee Hwa HO (Singapore)

Experts Chun-Hung SU(蘇峻弘), Ke-Wei CHEN (陳科維), Wei-Chieh HUANG(黃偉杰), Wei-Chieh LEE(李威杰), Kin-Lam TSUI(Hong Kong), Dafsah Arifa JUZAR(Indonesia)

TIME	TOPIC	SPEAKER
10:40-10:50	The Emerging Role of Artificial Intelligence in Myocardial Infarction Care	Shih-Sheng CHANG (張詩聖)
10:50-11:00	Supersaturated Oxygen Therapy in STEMI.	Kwan S. LEE (USA)
11:00-11:10	Four-Year Follow-Up Cardiovascular Event Rates in Patients with ST-Elevation Myocardial Infarction Were Lower with Early Increases in Mobilization of Oct-4highNanoghigh Stem Cells into the Peripheral Circulation	Soonjun HONG (Korea)
11:10-11:20	Evolution of Critical Care Cardiology: Transforming the Cardiovascular ICU to Optimize AMI Management in Indonesia	Indra PRASETYA (Indonesia)
11:20-11:30	Current Approach to STEMI Intervention	Hee Hwa HO (Singapore)
11:30-12:00	Discussion	



Date

Saturday, March 07, 2026

Time

10:40-12:00 (GMT+8)

Chairs



Chao-Ping WANG
(王朝平)



Ho-Tsung HSIN
(辛和宗)

Moderator



Tsung-Lin YANG
(楊宗霖)



Jiunn-Cheng LIN
(林俊呈)



Jing-Ling LUO
(羅景齡)



Yu-Cheng HSU
(許育誠)

Experts



Ta-Jung WANG
(王大榮)



Hsu-Lung JEN
(任勛龍)



Yu-Lun CHENG
(鄭宇倫)

Speakers



Meng-Ying LU
(呂孟穎)



Po-Lin LIN
(林柏霖)



Chun-Chin CHANG
(張俊欽)

Date Saturday, March 07, 2026

Time 10:40-12:00 (GMT+8)

TIME	TOPIC	SPEAKER	Moderator
10:40-10:42	Opening	Chao-Ping WANG (王朝平)	
10:42-11:02	從心出發、保全下肢：AMI 病人之血脂控制與慢性肢體威脅性缺血之臨床對策	Meng-Ying LU (呂孟穎)	Tsung-Lin YANG (楊宗霖)
11:02-11:20	乙型阻斷劑之亂：高心跳之高血壓危機處理	Po-Lin LIN (林柏霖)	Jiunn-Cherng LIN (林俊呈)
11:20-11:38	天冷你胸悶了嗎？高血糖與微小血管疾病的診斷與治療	Chun-Chin CHANG (張俊欽)	Jing-Ling LUO (羅景齡)
11:38-11:58	Discussion	Ta-Jung WANG (王大榮) Hsu-Lung JEN (任勗龍) Yu-Lun CHENG (鄭宇倫)	Yu-Cheng HSU (許育誠)
11:58-12:00	Closing	Ho-Tsung HSIN (辛和宗)	



Date Saturday, March 07, 2026

Time 13:00-14:00 (GMT+8)

Chairs



Chun-Yao HUANG
(黃群耀)



Kwan S. LEE
(USA)

Experts



Wei-Chun HUANG
(黃偉春)



Sanah CHRISTOPHER
(USA)



Sandeep NATHAN
(USA)

Date Saturday, March 07, 2026

Time 13:00-14:00 (GMT+8)

TIME	TOPIC	SPEAKER	Moderator
13:00-13:10	Opening Remarks	Chun-Yao HUANG (黃群耀)	Kwan S. LEE (USA)
13:10 -13:20	Discussion & Professional Exchange	All VIP Guests & Experts	
13:20-13:40	MOU Signing Ceremony	Kwan S. LEE (USA)	Chun-Yao HUANG (黃群耀)
13:40-13:50	GROUP PHOTO		
13:56-14:00	Closing		



Date Saturday, March 07, 2026

Time 14:00-15:00 (GMT+8)

Chairs



Ke-Wei CHEN
(陳科維)



Po-Hsun HUANG
(黃柏勳)

Moderator



Ke-Wei CHEN
(陳科維)



Ming-Yuan LUO
(羅明原)



Po-Hsun HUANG
(黃柏勳)

Experts



Wei-Ting LIU
(劉威廷)



Hseng-Long YEh
(葉勳龍)



Cheng-Hung CHIANG
(江承鴻)

Speakers



Wen-Sheng FENG
(馮文生)



Yuan-Yuan CHENG
(鄭媛元)

Date Saturday, March 07, 2026

Time 14:00-15:00 (GMT+8)

TIME	TOPIC	SPEAKER	Moderator
14:00-14:05	Opening	Ke-Wei CHEN (陳科維)	
14:05-14:20	Digital Transformation for Critical Care: AIoT, Digital Twins, and AI-CDSS at Scale	Wen-Sheng FENG (馮文生)	Ke-Wei CHEN (陳科維)
14:20-14:35	Cardiomyocyte Reprogramming for Heart Regeneration	Yuan-Yuan CHENG (鄭媛元)	Ming-Yuan LUO (羅明原)
14:35-14:55	Discussion	Wei-Ting LIU (劉威廷) Hseng-Long YEH (葉勳龍) Cheng-Hung CHIANG (江承鴻)	Po-Hsun HUANG (黃柏勳)
14:55-15:00	Closing	Po-Hsun HUANG (黃柏勳)	



Date Saturday, March 07, 2026

Time 15:20-16:40 (GMT+8)

Chairs



Chih-Ping HSIA
(夏治平)



Chih-Cheng WU
(吳志成)

Moderator



Chih-Ping HSIA
(夏治平)



Kai-Hung CHENG
(鄭凱鴻)



Chun-Ho YUN
(惲純和)



Chih-Cheng WU
(吳志成)

Experts



Po-Chih LIN
(林柏志)



Bu-Yuan HSHAO
(蕭卜源)



I-Fan LIU
(劉怡凡)

Speakers



Ying-Cian WANG
(王英謙)



Hui-Sheng WANG
(王惠生)



Jei-Yie HUANG
(黃潔宜)

Date Saturday, March 07, 2026

Time 15:20-16:40 (GMT+8)

TIME	TOPIC	SPEAKER	Moderator
15:20-15:22	Opening	Chih-Ping HSIA (夏治平)	
15:22-15:42	急診POCUS於AMI之應用	Ying-Cian WANG (王英謙)	Chih-Ping HSIA (夏治平)
15:42-16:02	光學影像OCT於AMI之應用	Hui-Sheng WANG (王惠生)	Kai-Hung CHENG (鄭凱鴻)
16:02-16:22	SPECT Myocardial Perfusion Imaging 於 CAD 之預後應用	Jei-Yie HUANG (黃潔宜)	Chun-Ho YUN (惲純和)
16:22-16:38	Discussion	Po-Chih LIN (林柏志) Bu-Yuan HSIAO (蕭卜源) I-Fan LIU (劉怡凡)	Chih-Cheng WU (吳志成)
16:38-16:40	Closing	Chih-Cheng WU (吳志成)	



Date

Sunday, March 08, 2026

Time

09:00-10:20 (GMT+8)

Chairs



Bin-Chou LEE
(李彬州)



Shih-Chiang HUNG
(洪士強)

Moderator



Bin-Chou LEE
(李彬州)



Shih-Chiang HUNG
(洪士強)

Experts

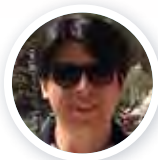


Shih-Chiang HUNG
(洪士強)

Speakers



Ying-Ju CHEN
(陳盈如)



Chien-Yu LIU
(劉健佑)



Chien-Chih CHEN
(陳建志)



Yen-Hung LIU
(劉彥宏)

Date Sunday, March 08, 2026

Time 09:00-10:20 (GMT+8)

TIME	TOPIC	SPEAKER	Moderator
09:00-09:02	Opening	Bin-Chou LEE (李彬州)	
09:02-09:16	STEMI院前預警地持續運作， 台北市經驗	Ying-Ju CHEN (陳盈如)	
09:16-09:30	STEMI院前預警地持續運作， 台中市經驗	Chien-Yu LIU (劉健佑)	Bin-Chou LEE (李彬州)
09:30-09:44	STEMI院前預警地持續運作， 屏東縣經驗	Chien-Chih CHEN (陳建志)	
09:44-09:58	STEMI院前預警地持續運作， 高雄市消防局經驗	Yen-Hung LIU (劉彥宏)	Shih-Chiang HUNG (洪士強)
09:58-10:18	Discussion	Shih-Chiang HUNG (洪士強)	
10:18-10:20	Closing	Shih-Chiang HUNG (洪士強)	



Date Saturday, March 07, 2026

Time 08:30-09:40 (GMT+8)

Chairs



Wei-Chun HUANG
(黃偉春)



Jun-Ting LIOU
(劉俊廷)

Moderator



Cheng-Hsueh WU
(吳承學)



Kuan-Rau CHIOU
(邱寬饒)



Chun-Ho YUN
(惲純和)



Yao-Chung CHUANG
(莊曜聰)



Chun-Hsien WU
(吳俊賢)

Experts



Cheng-Chih CHUNG
(鍾承志)



Patrick Yan-Tyng LIU
(劉彥廷)



Yen-Nien LIN
(林晏年)

Speakers



Po-Chih LIN
(林柏志)



Chun-Chih CHIU
(邱淳志)



Po-Hsueh SU
(蘇柏學)



Zheng-Wei CHEN
(陳政璋)

Date Saturday, March 07, 2026

Time 08:30-09:40 (GMT+8)

TIME	TOPIC	SPEAKER	Moderator
08:30-08:32	Opening	Wei-Chun HUANG (黃偉春)	
08:32-08:46	Optimizing Antiplatelet Strategies Post-MI: Risk Stratification and Personalized Strategies (抗板)	Po-Chih LIN (林柏志)	Cheng-Hsueh WU (吳承學)
08:46-09:00	The New Era of Cardio-Metabolic Protection: A Post-Acute Care Perspective on Glycemic Control (血糖)	Chun-Chih CHIU (邱淳志)	Kuan-Rau CHIOU (邱寬饒)
09:00-09:14	Redefining Post-MI Lipid Lowering Therapy: Incorporating Non-Statins into Therapeutic Protocols. (血脂)	Po-Hsueh SU (蘇柏學)	Yih-Jer WU (吳懿哲)
09:14-09:28	Precision Hypertension Control Post-MI: Target Goals and Therapeutic Pathways (血壓)	Zheng-Wei CHEN (陳政璋)	Yao-Chung CHUANG (莊曜聰)
09:28-09:38	Discussion	Cheng-Chih CHUNG (鍾承志) Yan-Tyng LIU (劉彥廷) Yen-Nien LIN (林晏年)	Chun-Hsien WU (吳俊賢)
09:38-09:40	Closing	Jun-Ting LIOU (劉俊廷)	



Date

Saturday, March 07, 2026

Time

10:40-12:00 (GMT+8)

Chairs



Chun-Yao HUANG
(黃群耀)



Gen-Min LIN
(林耕民)

Moderator



Bing-Hsian TZENG
(曾炳憲)



Fu-Chun CHIU
(邱富群)



Hao-Ming WU
(吳浩銘)



Tsung-Neng TSAI
(蔡宗能)



Yu-Chen WANG
(王宇澄)

Experts



Jih-Hua WEI
(魏日華)



Chien-Ming HUANG
(黃建銘)

Speakers



Yen-Wen WU
(吳彥雯)



Chiao-Hsiang CHANG
(張喬翔)



Chien-Yi HSU
(徐千彝)



Yu-Chun LEE
(李友淳)



Po-Wei CHEN
(陳柏偉)

Date

Saturday, March 07, 2026

Time

10:40-12:00 (GMT+8)

TIME	TOPIC	SPEAKER	Moderator
10:40-10:42	Opening	Chun-Yao HUANG (黃群耀)	
10:42-10:54	Exploring the Role and Significance of the Multidisciplinary Team Care Model in Post-Acute Care for Acute Myocardial Infarction (AMI-PAC)	Yen-Wen WU (吳彥雯)	Bing-Hsien TZENG (曾炳憲)
10:54-11:06	The Blueprint for Smart PAC: Leveraging AI and Wearable Technology for Remote Post-MI Monitoring. (AI / 遠距)	Chiao-Hsiang CHANG (張喬翔)	Fu-Chun CHIU (邱富群)
11:06-11:18	Preventing Post-MI Heart Failure Progression: Early Identification and Management in the Post-Acute Care Setting (心衰)	Chien-Yi HSU (徐千彝)	Hao-Ming WU (吳浩銘)
11:18-11:30	From Inpatient to Home: Implementing Structured Cardiopulmonary Rehabilitation Post-MI. (心肺復健)	Yu-Chun LEE (李友淳)	Tsung-Neng TSAI (蔡宗能)
11:30-11:42	Long-Term Coronary Follow-Up After Myocardial Infarction: A Structured Post-Acute Care Strategy (心血管追蹤)	Po-Wei CHEN (陳柏偉)	Yu-Chen WANG (王宇澄)
11:42-11:58	Discussion	Jih-Hua WEI (魏日華) Chien-Ming HUANG (黃建銘)	Gen-Min LIN (林耕民)
11:58-12:00	Closing	Gen-Min LIN (林耕民)	



Date

Saturday, March 07, 2026

Time

13:00-14:00 (GMT+8)

Chairs



Chi-Hung HUANG
(黃啟宏)



Shih-Wei MENG
(孟士璋)

Moderator



Shao-Sung HUANG
(黃少嵩)



Ming-Jer HSIEH
(謝明哲)



Sung-Hao HUANG
(黃嵩豪)



Chin-Chou HUANG
(黃金洲)

Experts



Mao-Heng WANG
(王懋衡)



Fa-Chang YU
(余法昌)

Speakers



Wei-Chieh HUANG
(黃偉杰)



Chieh-Yu CHEN
(陳玠宇)



Cho-Kai WU
(吳卓錯)

Date Saturday, March 07, 2026

Time 13:00-14:00 (GMT+8)

TIME	TOPIC	SPEAKER	Moderator
13:00-13:05	Opening	Chi-Hung HUANG (黃啟宏)	
13:05-13:15	PCSK9 Inhibition in Secondary Prevention: From Monoclonal Antibodies to siRNA Therapy	Wei-Chieh HUANG (黃偉杰)	Shao-Sung HUANG (黃少嵩)
13:15-13:25	Beyond High-intensity Statins: Integrating Inclisiran into Secondary Prevention After Myocardial Infarction	Chieh-Yu CHEN (陳玠宇)	Ming-Jer HSIEH (謝明哲)
13:25-13:35	New Oral Lipid Lowering Agent-Bembodoic acid and Possible Role Beyond Statin	Cho-Kai WU (吳卓鏞)	Sung-Hao HUANG (黃嵩豪)
13:35-13:55	Discussion	Mao-Heng WANG (王懋衡) Fa-Chang YU (余法昌)	Chin-Chou HUANG (黃金洲)
13:55-14:00	Closing	Shih-Wei MENG (孟士璋)	



Date Saturday, March 07, 2026

Time 14:00-15:00 (GMT+8)

Chairs



Wei-Cheng LIN
(林韋丞)



Hsin-Bang LEU
(呂信邦)

Moderator



Chung-Ming TU
(杜宗明)



Bor-Jen LEE
(李博仁)



Jia-Ying HU
(胡佳穎)



Ye-Hsu LU
(盧怡旭)

Experts



Chun-Chao CHEN
(陳俊兆)



Yuan-Po YANG
(楊淵博)



Peng-Ching HSIAO
(蕭鵬卿)

Speakers



Hsin-Chiao CHUANG
(莊心喬)



YI-Chun YANG
(楊宜郡)



Wan-Ting CHIANG
(江婉婷)

Date Saturday, March 07, 2026

Time 14:00-15:00 (GMT+8)

TIME	TOPIC	SPEAKER	Moderator
14:00-14:05	Opening	Wei-Cheng LIN (林韋丞)	
14:05-14:15	護心不漏接：從即時介入到長期守護—AMI 個管師的現況、轉型與未來	Hsin-Chiao CHUANG (莊心喬)	Chung-Ming TU (杜宗明)
14:15-14:25	從評鑑要求到臨床落實：AMI 個管師在整合照護啟動中的關鍵策略	Yi-Chun YANG (楊宜郡)	Bor-Jen LEE (李博仁)
14:25-14:35	用數據守護心臟：AMI 個管師視角下的冠狀動脈照護品質指標監測與應用	Wan-Ting CHIANG (江婉婷)	Jia-Ying HU (胡佳穎)
14:35-14:55	Discussion	Chun-Chao CHEN (陳俊兆) Yuan-Po YANG (楊淵博) Peng-Ching HSIAO (蕭鵬卿)	Ye-Hsu LU (盧怡旭)
14:55-15:00	Closing	Hsin-Bang LEU (呂信邦)	



Date Saturday, March 07, 2026

Time 15:20-16:40 (GMT+8)

Chairs



Ching-fen SHEN
(沈靜芬)



Chun-Yao HUANG
(黃群耀)

Moderator



Hung-I YEH
(葉宏一)



Ke-Hsin TING
(丁革新)



Ju-Chi LIU
(劉如濟)



Li-Min HUANG
(黃立民)

Experts



Chien-Hsien LO
(羅健賢)



Ju-Chi LIU
(劉如濟)



Li-Min HUANG
(黃立民)

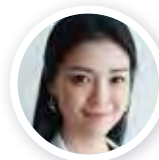
Speakers



Ching-fen SHEN
(沈靜芬)



Fei-Ran GUO
(郭斐然)



Yu-Ting TSAO
(曹玉婷)



Po-Lin LIN
(林柏霖)

Date Saturday, March 07, 2026

Time 15:20-16:40 (GMT+8)

TIME	TOPIC	SPEAKER	Moderator
15:20-15:25	Opening	Ching-fen SHEN (沈靜芬)	
15:25-15:40	專題演講	Ching-fen SHEN (沈靜芬)	Hung-I YEH (葉宏一)
15:40-15:55	Discussion	Chien-Hsien LO (羅健賢) Ju-Chi LIU (劉如濟) Li-Min HUANG (黃立民)	Ke-Hsin TING (丁革新)
15:55-16:10	新型菸品戒菸新進展	Fei-Ran GUO (郭斐然)	Ju-Chi LIU (劉如濟)
16:10-16:25	Vaccines Save Hearts: Influenza and Pneumococcal Immunization.	Yu-Ting TSAO (曹玉婷)	Li-Min HUANG (黃立民)
16:25-16:40	Mitigating Cardiovascular Risk in the Aging Population: The Role of COVID-19, RSV, and Herpes Zoster Vaccinations	Po-Lin LIN (林柏霖)	Ke-Hsin TING (丁革新)
16:40-16:55	Discussion	Chien-Hsien LO (羅健賢) Ju-Chi LIU (劉如濟) Li-Min HUANG (黃立民)	Ke-Hsin TING (丁革新)
16:55-17:00	Closing	Chun-Yao HUANG (黃群耀)	



Date

Sunday, March 08, 2026

Time

09:00-10:20 (GMT+8)

Chairs



Yen-Wen WU
(吳彥雯)



Hsin-Yueh LIANG
(梁馨月)

Moderator



Hsin-Yueh LIANG
(梁馨月)



Hui-Sheng WANG
(王惠生)



Chien-Hao HSIAO
(蕭健皓)

Speakers



Chien-Hao HSIAO
(蕭健皓)

Date Sunday, March 08, 2026

Time 09:00-10:20 (GMT+8)

TIME	TOPIC	SPEAKER	Moderator
09:00-09:05	Opening	Yen-Wen WU (吳彥雯)	
09:05-09:20	Fundamentals of cardiac ultrasound	Chien-Hao HSIAO (蕭健皓)	Hsin-Yueh LIANG (梁馨月)
09:20-09:40	攜帶式超音波儀器操作說明	米飛生醫	
09:40-10:15	Hand on Work Shop		指導醫師
工作站一	Group I: 8 people , 10 minute each person	Model 1	Hui-Sheng WANG (王惠生)
工作站二	Group II: 8 people , 10 minute each person	Model 2	Chien-Hao HSIAO (蕭健皓)
工作站三	Group III: EMT 救護人員: 8 people , 10 minute each person	Model 3	Hsin-Yueh LIANG (梁馨月)
10:15-10:20	Closing	Hsin-Yueh LIANG (梁馨月)	



Date Sunday, March 08, 2026

Time 10:20-11:20 (GMT+8)

Chairs



Chun-Yao HUANG
(黃群耀)



Myung Ho JEONG
(Korea)



Yu-Chen WANG
(王宇澄)

Moderator



Myung Ho JEONG
(Korea)



Satoshi YASUDA
(Japan)



Yu-Chen WANG
(王宇澄)



Hung-Yu CHANG
(張鴻猷)

Experts



Wei-Chun HUANG
(黃偉春)



Cheng-Hsueh WU
(吳承學)



Satoshi HONDA
(Japan)

Date Sunday, March 08, 2026

Time 10:20-11:20 (GMT+8)

TIME	TOPIC	SPEAKER/ Moderator
10:20-10:25	Opening	Chun-Yao HUANG (黃群耀) Myung Ho JEONG (Korea)
10:25-10:40	KAMIR Progress & Update	Myung Ho JEONG (Korea)
10:40-10:55	JAMIR Progress & Update	Satoshi YASUDA (Japan)
10:55-11:10	TAMIR Progress & Update	Yu-Chen WANG (王宇澄) Hung-Yu CHANG (張鴻猷)
11:10-11:18	Roundtable Discussions	Wei-Chun HUANG (黃偉春) Cheng-Hsueh WU (吳承學) Satoshi HONDA (Japan)
11:18-11:20	Closing	Yu-Chen WANG (王宇澄)



Topic

My challenge case in AMI patient (Calcification、Thrombus、DCB Use、Imaging Applications、Special Medication Techniques、MINOCA)

Date

Saturday, March 07, 2026

Time

08:30-09:40 (GMT+8)

Chairs



Chih-Neng HSU
(許智能)

Moderator



Chih-Neng HSU
(許智能)



Ke-Hsin TING
(丁革新)



Chi-Yao HUANG
(黃祺耀)



Li-Wei CHEN
(陳立威)



Chien-Yuan HUANG
(黃建元)



Pai-Feng HSU
(許百豐)

Topic My challenge case in AMI patient(Calcification、Thrombus、DCB Use、Imaging Applications、Special Medication Techniques、MINOCA)

Date Saturday, March 07, 2026

Time 08:30-09:40 (GMT+8)

TIME	TOPIC	SPEAKER	Moderator
08:30-08:32	Opening		Chih-Neng HSU (許智能)
Judge: Chih-Neng HSU (許智能), Ke-Hsin TING (丁革新), Chi-Yao HUANG (黃祺耀), Li-Wei CHEN (陳立威), Chien-Yuan HUANG (黃建元), Pai-Feng HSU (許百豐)			
08:32-08:39	Phaeochromocytoma Presented as Reverse Takotsubo Cardiomyopathy	Yung-Hsin CHEN (陳雍欣)	Chih-Neng HSU (許智能)
08:39-08:42	Q&A		
08:42-08:49	Mechanical Thrombus Aspiration in Highly Tortuous and Ectatic Vessels during Acute Coronary Syndrome	Si-Rui CHEN (陳思睿)	Ke-Hsin TING (丁革新)
08:49-08:52	Q&A		
08:52-08:59	When Right Isn't Right: STEMI in an Anomalous RCA from the Left Coronary Cusp	Yuan-Chieh YU (尤垣傑)	Chi-Yao HUANG (黃祺耀)
08:59-09:02	Q&A		
09:02-09:09	When Acute Looks Chronic: Solving an LAD ATO with Misleading RCA Collaterals	Jui-Tzu HUANG (黃睿慈)	Li-Wei CHEN (陳立威)
09:09-09:12	Q&A		
09:12-09:19	Clinical Use of Retrieval stent during Percutaneous Coronary Intervention: case presentations	Ying-Nan CHENG (鄭英男)	Chien-Yuan HUANG (黃建元)
09:19-09:22	Q&A		
09:19-09:26	Successful CHIP PCI and BAV for Concomitant ACS and Critical Aortic Stenosis with SCAI Stage D Cardiogenic Shock	Jyun-Yu JHONG (鍾竣宇)	Pai-Feng HSU (許百豐)
09:26-09:29	Q&A		
09:29-09:38	Awards		Chih-Neng HSU (許智能)
09:38-09:40	Closing		Chih-Neng HSU (許智能)



Date

Saturday, March 07, 2026

Time

10:40-12:00 (GMT+8)

Chairs



Shu-Meng CHENG
(鄭書孟)



Wei-Wen LIN
(林維文)

Moderator



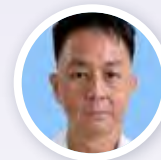
Szu-Chi CHIEN
(簡思齊)



Chao-Shun CHAN
(詹超舜)



Yi-Yao CHANG
(張藝耀)



Wei-Wen LIN
(林維文)

Experts



Hsiang-Yao CHEN
(陳相堯)



Chao-Yung WANG
(王朝永)

Speakers



Chien-Ting PAN
(潘建廷)



Chon-Seng HONG
(洪俊聲)



Ying-Chang TUNG
(董穎璋)



Chun-Yu SHIH
(施淳友)

Date Saturday, March 07, 2026

Time 10:40-12:00 (GMT+8)

TIME	TOPIC	SPEAKER	Moderator
10:40-10:42	Opening	Shu-Meng CHENG (鄭書孟)	
10:42-10:57	Plaque rupture vs. erosion：影像如何改變 AMI 治療決策？	Chien-Ting PAN (潘建廷)	Szu-Chi CHIEN (簡思齊)
10:57-11:01	Discussion	Hsiang-Yao CHEN (陳相堯)	
11:01-11:16	AMI 合併重度鈣化病灶：導管處理與影像指引策略	Chon-Seng HONG (洪俊聲)	Chao-Shun CHAN (詹超舜)
11:16-11:20	Discussion	Hsiang-Yao CHEN (陳相堯)	
11:20-11:35	Physiology-Guided PCI in AMI With Multivessel Disease	Ying-Chang TUNG (董穎璋)	Yi-Yao CHANG (張藝耀)
11:35-11:39	Discussion	Chao-Yung WANG (王朝永)	
11:39-11:54	AMI 支架置入的最佳化：如何在緊急時兼顧精準？	Chun-Yu SHIH (施淳友)	Wei-Wen LIN (林維文)
11:54-11:58	Discussion	Chao-Yung WANG (王朝永)	
11:58-12:00	Closing	Wei-Wen LIN (林維文)	



Date Saturday, March 07, 2026

Time 13:00-14:00 (GMT+8)

Chairs



Chun-Chin CHANG
(張俊欽)



Yu-Chen WANG
(王宇澄)

Moderator



Chun-Chin CHANG
(張俊欽)



Yu-Chen WANG
(王宇澄)

Speakers



Wei-Ting SUNG
(宋偉廷)



Hsuan-We CHU
(朱軒緯)

Date Saturday, March 07, 2026

Time 13:00-14:00 (GMT+8)

TIME	TOPIC	SPEAKER	Moderator
13:00-13:03	Opening	Chun-Chin CHANG (張俊欽)	
13:03-13:20	Evolving Antiplatelet Strategies After ACS: What Have We Learned From Recent Trials?	Wei-Ting SUNG (宋偉廷)	Chun-Chin CHANG (張俊欽)
13:20-13:40	Long-term SAPT Strategies: Review of Historical and Contemporary Evidence	Hsuan-We CHU (朱軒緯)	Yu-Chen WANG (王宇澄)
13:40-14:00	Discussion	ALL	
13:55-14:00	Closing	Yu-Chen WANG (王宇澄)	



Date

Saturday, March 07, 2026

Time

14:00-15:00 (GMT+8)

Chairs



Tse-Min LU
(盧澤民)

Moderator



Tse-Min LU
(盧澤民)

Speakers



Yu-Chen WANG
(王宇澄)

Date Saturday, March 07, 2026

Time 14:00-15:00 (GMT+8)

TIME	TOPIC	SPEAKER	Moderator
14:00-14:05	Opening	Tse-Min LU (盧澤民)	
14:05-14:35	高風險血脂治療路徑與策略	Yu-Chen WANG (王宇澄)	Tse-Min LU (盧澤民)
14:35-14:50	Discussion	ALL	
14:50-15:00	Closing	Tse-Min LU (盧澤民)	



Date

Saturday, March 07, 2026

Time

15:20-16:40 (GMT+8)

Chairs



Chun-Che SHIH
(施俊哲)



Chung-Lin TSAI
(蔡忠霖)

Moderator



Yi-Ting TSAI
(蔡宜廷)



Chun-Neng JUAN
(阮俊能)



Shao-Jung LI
(李紹榕)

Experts



Chen-Yuan HSIAO
(蕭鎮源)



Ping-Yi LIN
(林秉毅)



Chun-Yang HUANG
(黃竣暘)

Speakers



Po-Shun HSU
(許博順)



Chugn-Yu LO
(羅崇佑)



Chi-Hsing LIU
(劉濟興)

Date Saturday, March 07, 2026

Time 15:20-16:40 (GMT+8)

TIME	TOPIC	SPEAKER	Moderator
15:20-15:22	Opening	Chun-Che SHIH (施俊哲)	
15:22-15:37	Mechanical support for AMI with cardiogenic shock	Po-Shun HSU (許博順)	Yi-Ting TSAI (蔡宜廷)
15:37-15:52	The contemporary role of intra-aortic balloon pump in the management of cardiovascular disease	Chugn-Yu LO (羅崇佑)	
15:52-16:07	Comparative long-term effectiveness of robotic vs. non-robotic coronary artery bypass grafting: insights from a propensity-matched TriNetX analysis	Chi-Hsing LIU (劉濟興)	Chun-Neng JUAN (阮俊能)
16:07-16:28	Discussion	Chen-Yuan HSIAO (蕭鎮源) Ping-Yi LIN (林秉毅) Chun-Yang HUANG (黃竣暘)	Shao-Jung LI (李紹榕)
16:28-16:30	Closing	Chung-Lin TSAI (蔡忠霖)	



Date Saturday, March 07, 2026

Time 16:40-17:40 (GMT+8)

Chairs



Wei-Chun HUANG
(黃偉春)



Thomas ALEXANDER
(India)



Yuji IKARI
(Japan)

Experts



Cheng-Hsueh WU
(吳承學)



Chun-Yuan CHU
(朱俊源)



Hee Hwa HO
(Singapore)



Dafsah Arifa JUZAR
(Indonesia)



Firandi SAPUTRA
(Indonesia)



Jose Nicolas CRUZ
(Philippines)



Simon LO
(Malaysia)

Speakers



Wasan UDAYACHALERM
(Thailand)



Ryan BUENDIA
(Philippines)

Date Saturday, March 07, 2026 **Time** 16:40-17:40 (GMT+8)

Chair Wei-Chun Huang (黃偉春), Thomas Alexander (India), Yuji Ikari (Japan)

Experts Cheng-Hsueh WU(吳承學), Chun-Yuan CHU(朱俊源), Hee Hwa HO (Singapore), Dafsah Arifa Juzar (Indonesia), Firandi Saputra (Indonesia), Jose Nicolas Cruz (Philippines), Simon Lo (Malaysia)

TIME	TOPIC	SPEAKER
16:40-16:45	Opening	
16:45-16:55	STEMI Challenges in the Thailand Setting	Wasan Udayachalerm (Thailand)
16:55-17:10	Discussion	
17:10-17:20	STEMI Challenges in the Philippine Setting	Ryan BUENDIA (Philippines)
17:20-17:34	Discussion	
17:34-17:40	Closing	



Date

Sunday, March 08, 2026

Time

09:00-10:20 (GMT+8)

Chairs



Chi-Hung HUANG
(黃啟宏)



Chung-Lieh HUNG
(洪崇烈)

Moderator



Po-Hsun HUANG
(黃柏勳)



Ta-Lung CHEN
(陳大隆)



Chih-Hung LAI
(賴志泓)



Ko-Lung LIN
(林克隆)

Experts



Wei-Shin LIU
(劉維新)



Yen-Liang LIN
(林彥良)



Cho-Kai WU
(吳卓錯)

Speakers



Tzu-Lin WANG
(王子林)



Chia-Hsiu CHANG
(張嘉修)



Po-Ching CHOU
(周柏青)



Mu-Yang HSIEH
(謝慕揚)

Date Sunday, March 08, 2026

Time 09:00-10:20 (GMT+8)

TIME	TOPIC	SPEAKER	Moderator
09:00-09:02	Opening	Chi-Hung HUANG (黃啟宏)	
09:02-09:16	Case Presentation, Overview of Heart Failure	Tzu-Lin WANG (王子林)	Po-Hsun HUANG (黃柏勳)
09:16-09:30	From ER to ICU, Focused on Acute Decompensated Heart Failure	Chia-Hsiu CHANG (張嘉修)	Ta-Lung Chen (陳大隆)
09:30-09:44	From ICU to Ward, Focused on Chronic Heart Failure	Po-Ching CHOU (周柏青)	Chih-Hung LAI (賴志泓)
09:44-09:58	From Ward to Home : The Cardiac Rehabilitation Journey	Mu-Yang HSIEH (謝慕揚)	Ko-Lung LIN (林克隆)
09:58-10:18	Discussion	Wei-Shin LIU (劉維新) Yen-Liang LIN (林彥良) Cho-Kai WU (吳卓錯)	Chung-Lieh HUNG (洪崇烈)
10:18-10:20	Closing	Chung-Lieh HUNG (洪崇烈)	



Topic

第二屆護心獎-台灣最佳心肌梗塞照護護理團隊/護理人員入圍成果發表會

Date

Sunday, March 08, 2026

Time

10:40-12:00 (GMT+8)

Chairs



Shu-Liu GUO
(郭淑柳)



Wei-Cheng LIN
(林韋丞)

Moderator



Mei-Hui LI
(李美慧)



Wen-Ying KUO
(郭文英)



Hui-Mei LIN
(林慧美)

Date Sunday, March 08, 2026

Time 10:40-12:00 (GMT+8)

TIME	TOPIC	SPEAKER	Moderator
10:40-10:42	Opening	Shu-Liu GUO (郭淑柳)	
評審委員：Wei-Shin LIU(劉維新)、Wei-Cheng LIN(林韋丞)、Jia-Ying HU (胡佳穎)、Yu-Lu, HUANG (黃鈺茹)、Hui-Chuan CHENG(鄭慧娟)			
09:02-09:16	最佳心肌梗塞照護護理入圍團隊 三軍總醫院-重症護理的樞紐價值：串聯急性心肌梗塞照護體系的關鍵力量	An-Yun CHEN (鄭安芸)	
	最佳心肌梗塞照護護理入圍團隊 中山醫學大學附設醫院-守護心導e世代	Jui-Chen LIN (林汭綦)	Mei-Hui LI (李美慧)
	最佳心肌梗塞照護護理入圍團隊 雙和醫院-心臟內外科加護病房	CHING-WAN, LUAN (樂靜莞)	
09:16-09:30	最佳心肌梗塞照護護理入圍團隊 新光醫療財團法人新光吳火獅紀念醫院-心光守護心臟團隊	I-Ping LIN (林依屏)	
09:30-09:44	Q&A		Wen-Ying KUO (郭文英)



Date Sunday, March 08, 2026

Time 10:40-12:00 (GMT+8)

TIME	TOPIC	SPEAKER	Moderator
11:12-11:17	最佳心肌梗塞照護護理入圍人員	亞東紀念醫院 Hsin-Chiao CHUANG (莊心喬)	Hui-Mei LIN (林慧美)
11:17-11:22		童綜合醫院 YI-Chun YANG (楊宜郡)	
11:22-11:27		新光吳火獅紀念醫院 I-Ping LIN (林依屏)	
11:27-11:32		台北市立萬芳醫院 Tzu-Hua WANG (王咨驊)	
11:32-11:37		衛生福利部雙和醫院 Hung-Huei LI (李虹慧)	
11:37-11:42		台北醫學大學附設醫院 I-JU KAO (高宜如)	
11:42-11:47		中山醫學大學附設醫院 Tai-Yu WENG (翁岱鈺)	
11:47-11:57	Q & A	Wen-Ying KUO (郭文英)	
11:57-11:59	Closing	Wei-Cheng LIN (林韋丞)	

2026 第一屆 衛心獎

2026 1st HeartWise Media Award

以心肌梗塞的預防、
照護或病患自我管理為核心，
內容需正確、
具教育意義並符合臨床實務。
形式不限，越有創意越好！



2026

GAMI
SSL-AP
SCAI-Asia
TAMIS



WHO IS THE KING OF **AMi**? KNOWLEDGE?

MAR. 7 SAT. 09:50-10:20

MODERATOR



Wei-Ting SUNG
(宋偉廷)

Pei-Hsi WU
(吳沛禧)

Time	Topic	Competition Method
09:50-09:52	Opening	Explain how the game works (answer the question within 3 seconds after rushing to answer) Description Grouping
09:52-10:05	Preliminaries	Group + Quick Answer Race
10:05-10:18	Finals	Quick Answer Race
10:18-10:20	Closing	



到院前

心肌梗塞救護 大作戰

2026

GAMI
SSL-AP
SCAI-Asia
TAMIS



MAR. 8 SUN. 10:40-12:00

MODERATOR



Chun-Chieh CHAO
(趙君傑)

Wen-Shuo YANG
(楊文碩)

Chin-Ming HSIEH
(謝金明)

Song-Yao HUANG
(黃嵩堯)

Chia-Ku TING
(丁嘉顧)

Level Name

Opening

第一關 雷神索爾的指南針 - 救命紅點大作戰

第二關 心靈神會 - 蒙面波形師

第三關 STEMI 畢卡索 - 瞬目辨心

第四關 心肌對抗 - 地產大亨

第五關 【極速迴路】——辨識求救、急救先鋒

第六關 【判心偵探】——AMI 臨床決策與交接

Closing

Date Saturday, March 07, 2026

Time 12:10-13:00(GMT+8)

TIME	TOPIC	SPEAKER	Moderator
12:10-12:15	Opening	Chun-Yao HUANG (黃群耀)	
12:15-12:45	Optimizing Post-ACS Outcomes: Striking Early and Strong in the Era of Lipid Management P4P	Chien-Yi HSU (徐千彝)	Chun-Yao HUANG (黃群耀)
12:45-12:55	Panel Discission	ALL	
12:55-13:00	Discussion	Chun-Yao HUANG (黃群耀)	

Date Saturday, March 07, 2026

Time 12:05-13:00(GMT+8)

TIME	TOPIC	SPEAKER	Moderator
12:10-12:15	Opening	Yen-Wen WU (吳彥雯)	
12:15-12:45	Managing High-Risk Patients: Non-Statin Options for Cardiovascular Protection	Po-Lin LIN (林柏霖)	Yen-Wen WU (吳彥雯)
12:45-12:55	Panel Discission		ALL
12:55-13:00	Discussion	Yen-Wen WU (吳彥雯)	



Date Saturday, March 07, 2026

Time 12:10-1300 (GMT+8)

TIME	TOPIC	SPEAKER	Moderator
12:10-12:15	Opening	Wei-Chun HUANG (黃偉春)	
12:15-12:45	Anticoagulation Strategy for AF Patients with MI & the Role of Shared Decision-Making	Wei-Cheng LIN (林韋丞)	Wei-Chun HUANG (黃偉春)
12:45-12:55	Panel Discission	ALL	
12:55-13:00	Discussion	Wei-Chun HUANG (黃偉春)	

Date Saturday, March 07, 2026

Time 12:10-13:00 (GMT+8)

TIME	TOPIC	SPEAKER	Moderator
12:10-12:15	Opening	Cheng-Hsueh WU (吳承學)	
12:15-12:45	Lp(a) and Beyond: Emerging Management Paradigms in ASCVD	Wei-Ting CHANG (張瑋婷)	Cheng-Hsueh WU (吳承學)
12:45-12:55	Panel Discission	ALL	
12:55-13:00	Discussion	Cheng-Hsueh WU (吳承學)	



Date Sunday, March 08, 2026

Time 12:05-13:00(GMT+8)

TIME	TOPIC	SPEAKER	Moderator
12:05-12:10	Opening	Chun-Yao HUANG (黃群耀)	
12:10-12:45	Class Effect or Molecule Specificity? Decoding GLP-1 RAs CV Landscape	Cho-Kai WU (吳卓錯)	Chun-Yao HUANG (黃群耀)
12:45-12:55	Panel Discission	ALL	
12:55-13:00	Closing	Chun-Yao HUANG (黃群耀)	

Date Sunday, March 08, 2026

Time 12:05-13:00(GMT+8)

TIME	TOPIC	SPEAKER	Moderator
12:05-12:10	Opening	Yu-Chen WANG (王宇澄)	
12:10-12:45	The Power of Dual Inhibition Optimize Lipid Management across Different Comorbidities	Chon-Seng HONG (洪俊聲)	Yu-Chen WANG (王宇澄)
12:45-12:55	Panel Discission	ALL	
12:55-13:00	Discussion	Yu-Chen WANG (王宇澄)	



Note

Sponsors

台灣安進藥品有限公司

台灣諾和諾德藥品股份有限公司

台灣第一三共股份有限公司

賽諾菲股份有限公司

臺灣阿斯特捷利康股份有限公司

台灣百靈佳殷格翰股份有限公司

台灣諾華股份有限公司

台灣羅氏醫療診斷設備股份有限公司

荷商波士頓科技有限公司台灣分公司

荷商歐嘉隆有限公司

台灣卓爾醫療器材有限公司

美敦力醫療產品股份有限公司

台灣柏朗股份有限公司

高仕生技股份有限公司

輝瑞大藥廠股份有限公司

台灣武田藥品工業股份有限公司

台灣拜耳股份有限公司

友霖生技醫藥股份有限公司

台灣泰利福醫療產品股份有限公司

台灣雅培醫療器材有限公司

法蘭德生技有限公司

暉致醫藥股份有限公司

鷹展實業有限公司

台灣飛利浦股份有限公司

米飛生醫股份有限公司

天義公司



戒菸的關鍵時刻 請拉他一把

- ✓ 有專業人員協助與使用戒菸藥物的成功率，是僅靠自己意志力成功戒菸率的數倍¹
- ✓ 善用戒菸藥物可降低想吸菸的慾望，大大增加戒菸成功率²

Reference: 1. 衛生福利部國民健康署菸害防制組, 2018 菸害防制年報, 2. 衛生福利部國民健康署, 戒菸教戰手冊。

CHAMPIX[®] Film Coated Tablet (varenicline) 0.5 mg 戒必適 膜衣錠 0.5 毫克
CHAMPIX[®] Film Coated Tablet (varenicline) 1 mg 戒必適 膜衣錠 1 毫克

0.5 毫克 衛署藥輸字第 024649 號
1 毫克 衛署藥輸字第 024648 號

【適應症】 戒菸輔助劑。**【劑量與用法】** 成人的一般使用劑量：戒菸治療比較可能成功用於那些有強烈戒菸動機以及獲得額外建議和支持的病人。應提供病人適當的衛教資料和諮詢以支持其戒菸。病人應預設一個停止吸菸的日期，並在這個日期之前一週開始投藥。病人可以選擇開始服用 CHAMPIX，然後在療程的第 8 天到第 35 天之間任選停止吸菸日期。CHAMPIX 應在飯後口服，並以一整杯水配服。CHAMPIX 的建議使用劑量如上方表格，先經過一週的劑量調整後，再改為每日兩次服用 1 mg。病人應使用 CHAMPIX 治療 12 週。病人若未能在 12 週的初始治療期間成功戒菸或治療後又於癮復發，一旦造成戒菸失敗的因素得以被確認並處理，應鼓勵這些病人繼續嘗試戒菸。病人若無法忍受 CHAMPIX 的不良反應，可以暫時或永久調降劑量。**【禁忌】** CHAMPIX 禁用於已知會對 CHAMPIX 產生嚴重過敏反應或皮膚反應的病人。**【警語及注意事項】** 包含自殺在內的神經精神不良事件：接受 CHAMPIX 治療的病人曾通報發生嚴重的神經精神不良事件。若病人有平時未觀察到的情緒波動、情緒低落或行為改變，或是病人出現自殺意念或自殺行為時，建議病人應停止服用 CHAMPIX 並立即與醫療人員聯繫。癲癇：在臨床試驗期間及上市後使用經驗中，曾有接受 CHAMPIX 治療的病人癲癇發作的報告。有些病人原本並無癲癇發作病史，而其他病人的癲癇發作病史時間久遠或控制良好。在大部份病例中，癲癇發作出現在治療第一個月內。對於有癲癇發作病史或其他可能降低癲癇發作閾值的因素的病人，開立 CHAMPIX 處方前應審量此項潛在風險和效益。應告知病人，若治療期間癲癇發作，應停用 CHAMPIX 並立即聯絡醫療照顧人員。酒精交互作用：目前已有病人在使用 CHAMPIX 期間經歷酒精毒性作用增強的上市後通報案例。部份案例描述有不尋常有時甚至具攻擊性的行為，且經常伴隨對事件失憶。應告知病人，若治療期間同時接受 CHAMPIX 治療的病人可能會增加 CV 的風險；指示病人在發生新的 CV 症狀或原有 CV 症狀惡化時告知醫療人員，並且在發生 MI 或中風的徵象和症狀時立即就醫。夢遊：在使用 CHAMPIX 的病人中曾有通報夢遊案例。請指示病人如果發生夢遊，應停用 CHAMPIX 並告知其醫療人員。血管性水腫和過敏反應：在上市後通報案例中，有接受 CHAMPIX 治療病人發生包括血管性水腫的過敏反應。有少數因呼吸困難危及生命而需要急救的血管性水腫通報案例。嚴重皮膚反應：目前上市後通報案例中，曾有使用 CHAMPIX 病人發生罕見但嚴重的皮膚反應，包括 Stevens-Johnson 症候群和多型性紅斑。由於這些皮膚反應會危及生命，請指示病人在初次皮膚起疹伴隨黏膜損傷或任何其他過敏徵象出現時，應立即停用 CHAMPIX，並聯絡病人醫療照顧人員。噁心、噁心是使用 CHAMPIX 治療時最常見於報告的不良反應。噁心症狀一般描述為輕度或中度，而且通常為暫時性。噁心的發生率與劑量有關。初始劑量調整(initial dose-titration) 有利於減少噁心的發生率。**【副作用/不良反應】** 下列嚴重不良反應皆為上市後使用經驗中所通報的不良反應。神經精神不良事件：包括自殺、癲癇、酒精交互作用、操作機械能力、心血管事件；夢遊、血管性水腫和過敏反應；嚴重皮膚反應。在上市前安慰劑對照研究中，與 CHAMPIX 相關的嚴重不良事件（發生率，5%，且為安慰劑治療組發生率的至少兩倍）有噁心、惡夢（逼真、不尋常或怪異的夢境）、便秘、脹氣和嘔吐。不尋常無熱動治療：戒菸都可能引發尼古丁戒斷症狀，並常伴隨出現戒斷精神疾病惡化的現象。**【藥物動力學特性】** 吸收：Varenicline 的最高血液濃度通常出現在口服投藥後的 3-4 小時內。Varenicline 口服投藥與多次劑量後，血液濃度會在 4 天內到達穩定狀態。排除/代謝：Varenicline 的排除半衰期約為 24 小時。Varenicline 的代謝程度極低，約 92% 以未經代謝的藥物原型排泄至尿液中。**【藥物交互作用】** 根據 varenicline 的特性和現有的臨床經驗，CHAMPIX 並無臨床上有意義的藥物學藥物交互作用。**【特殊族群注意事項】** 懷孕：現有試驗無法明確建立或排除 varenicline 在懷孕期間的任何相關風險。授乳：針對 varenicline 是否存在於人乳中，對哺乳嬰兒產生的影響，或對乳汁生成的影響，目前並無相關資料。不過，仍應同時考量哺乳在發育和健康方面的益處。母體對於 CHAMPIX 的臨床需求，以及 CHAMPIX 或母親的潛在狀況對哺乳中兒童可能造成的任何不良反應。小兒使用：CHAMPIX 不建議用於 18 歲以下的兒童病人，因為在此族群的療效尚未證實。老年人使用：應特別小心，監測腎功能可能有助於投藥劑量的決定。建議老年病人無需調整劑量。腎功能不全：對輕至中度腎功能受損的病人，毋須降低劑量。對重度腎功能受損（估計肌酸酐清除率 <30 mL/min）的病人，以及正在進行血液透析治療的末期腎病病人，則必須調整劑量。**【包裝及儲存】** CHAMPIX 為口服投藥劑量，有兩種含量劑型：一種是 0.5 毫克膜衣錠，為白色或灰白色膠囊狀雙凸錠，其中一面有內凹的“Pfizer”字樣，另一面有內凹的“CHX 0.5”字樣，包裝為內含 11 顆 0.5 mg 膜衣錠之鋁箔盒裝；另一種是 1 毫克膜衣錠，為淡藍色膠囊狀雙凸錠，其中一面有內凹的“Pfizer”字樣，另一面有內凹的“CHX 1.0”字樣，包裝為內含 56 顆 1 mg 膜衣錠之鋁箔盒裝。儲存於 25° C 以下。

第 1-3 天	每日一次 0.5 mg
第 4-7 天	每日兩次 0.5 mg
第 8 天 - 治療結束	每日兩次 1 mg

版本：USPI 201902-5 文件核准日期：2025年3月14日 本藥須由醫師處方使用 完整資訊請詳閱CHAMPIX仿單

Inspira® 迎甦心®

心穩力強，生命遠航¹

心肌梗塞後之
心衰竭¹

NYHA 第 II 級
(慢性) 心衰竭¹

Inspira® 與安慰劑相比：

EPHESUS study²

在急性心肌梗塞 3-14 天內使用 Inspira®

顯著
降低

15%

總死亡風險

EMPHASIS-HF study³

慢性心衰竭患者使用 Inspira®

顯著
降低

37%

住院或心血管死亡風險

請掃描 QR code 取得 Inspira® 迎甦心 膜衣錠 50 毫克仿單資訊



Reference:

1. Inspira® 中文仿單
2. Pitt B, et al. N Engl J Med. 2003;348:1309-21.
3. Zannad F, et al. N Engl J Med. 2011;364(1):11-21.

Abbreviation:

CV = cardiovascular; NYHA = New York Heart Association.



Optimizing Post-ACS Outcomes: Striking Early and Strong in the Era of Lipid Management P4P



SPEAKER

徐千彞 醫師

臺北醫學大學附設醫院



MODERATOR

黃群耀 醫師

臺北醫學大學附設醫院

12:10-12:15

Opening

MODERATOR

黃群耀 醫師

臺北醫學大學附設醫院

12:15-12:45

**Optimizing Post-ACS Outcomes:
Striking Early and Strong in the Era of Lipid
Management P4P**

SPEAKER

徐千彞 醫師

臺北醫學大學附設醫院

MODERATOR

黃群耀 醫師

臺北醫學大學附設醫院

12:45-12:55

Panel Discussion

ALL

12:55-13:00

Closing

MODERATOR

黃群耀 醫師

臺北醫學大學附設醫院

瑞吉安 注射液 Repatha® (evolocumab) Solution for Injection

衛部醫器輸字第001033號

適應症：REPATHA 可用於：對於已確診心血管疾病的成年病人，可降低心肌梗塞、中風及冠狀動脈血管重建術的風險。可單獨使用或併用其他降低低密度脂蛋白膽固醇 (LDL-C) 藥物，作為飲食外的輔助治療以降低原發性高脂血症 (包含異合子家族性高膽固醇血症 [HeFH]) 或成人病人之 LDL-C。作為飲食及併用其他降低低密度脂蛋白膽固醇 (LDL-C) 藥物的輔助治療，以降低 10 歲以上異合子家族性高膽固醇血症 (HeFH) 兒童及青少年病人之 LDL-C。建議劑量：對於已確診心血管疾病或原發性高脂血症的成年病人，REPATHA 的建議劑量為每 2 週一次 140 mg 或每月一次 420 mg 皮下注射。改變用法用量時，應在原先排定的下一次回診治療日，使用新治療時程的第一劑。對於 10 歲以上的 HeFH 兒童及青少年病人，REPATHA 的建議劑量為每 2 週一次 140 mg 或每月一次 420 mg 皮下注射。改變用法用量時，應在原先排定的下一次回診治療日，使用新治療時程的第一劑。禁忌：REPATHA 禁用於對 evolocumab 或 REPATHA 其中任何成分有嚴重過敏反應的病人。警語及注意事項：過敏反應：接受 REPATHA 治療的病人曾發生包括血管性水腫等過敏反應。如果出現嚴重過敏反應的症候或症狀，請停止 REPATHA 治療，依據標準照護進行治療，並監測直到症候及症狀緩解。副作用/不良反應：原發性高脂血症成年病人的不良反應在 1 項 52 週試驗中，REPATHA 治療組發生率 3% 以上且高於安慰劑組的不良反應為鼻膜炎、上呼吸道感染、流行性感冒、背痛、注射部位反應、咳嗽、尿道感染、鼻竇炎、頭痛、肌痛、頸痛、肌肉骨骼疼痛、高血壓、腹瀉及腸胃炎。在 7 項合併分析 12 週試驗中，REPATHA 治療組發生率 1% 以上且高於安慰劑組的不良反應為鼻膜炎、背痛、上呼吸道感染、關節疼痛、眩暈、疲勞、肌肉痠痛、尿道感染、咳嗽、流行性感冒及性慾。最常見的注射部位反應為紅腫、疼痛及癢。最常見的過敏反應為皮疹、濕疹、紅腫及腫痛。心血管結是試驗性的不良反應。本試驗中 REPATHA 的安全性資料大致與原發性高脂血症病人試驗的安全性資料相符。常見不良反應包括腰痛、鼻膜炎及上呼吸道感染。HeFH 兒童及青少年的不良反應在 1 項 24 週試驗中，REPATHA 治療組發生率 > 5% 且頻率高於安慰劑組的不良反應為鼻膜炎、頭痛、口渴疼痛、流行性感冒及上呼吸道感染。





利甫蓋素 濃縮注射液 REPLAGAL[®]

本藥品已由台灣衛生福利部食品藥物管理署依『罕見疾病防治及藥物法』審查通過，列入罕見疾病用藥品項中，用於治療 α -galactosidase A缺乏病人(即法布瑞氏症)提供長期酵素補充治療。

Replagal 三大產品特點



目前市面上唯一人類細胞來源
 α -Gal A enzyme之ERT治療選項^{1,2}



低免疫原性
(Low potential for immunogenicity)²



每兩週一次, 40分鐘即可完成輸注
(every other week)^{1,3}

利甫蓋素濃縮注射液REPLAGAL治療原則



透過手部靜脈緩慢注射至血液中，
稱為「靜脈注射」(或簡稱IV注射)。



靜脈注射至少40分鐘。



一次劑量為每公斤體重0.2mg，
每2週注射一次。



利甫蓋素濃縮注射液REPLAGAL用於
治療法布瑞氏症，提供長期酵素補充治療。



利甫蓋素濃縮注射液REPLAGAL必須經由治療法布瑞氏症病人的醫師
或其他有遺傳代謝疾病相關經驗之專科醫師開立處方。

產品名稱：利甫蓋素濃縮注射液1毫克/毫升 Replagal 1mg/ml Concentration for Solution for Infusion
衛署罕見疾病藥物字號000004號

組成：1毫升濃縮注射液含1毫克 α -agalsidase，每支3.5毫升濃縮注射液小瓶含3.5毫克 α -agalsidase。

藥商名稱：台灣武田藥品工業股份有限公司

藥商地址：台北市信義區松高路1號17樓

【處方資訊摘要】

適應症：用於治療 α -galactosidase A 缺乏患者 (即 Fabry Disease)，提供長期酵素補充治療。

用法用量：Replagal 一次劑量為每公斤體重 0.2 mg，以靜脈輸注至少 40 分鐘，隔週注射一次。

禁忌症：對主成分或任何賦形劑產生過敏反應者，不可使用。

警語及注意事項：

- 為了增進生物藥品的可追溯性，施用產品的名稱和批號都應被清楚地記錄。
- 在臨床試驗中，13.7% 成人病人對 Replagal 產生特異輸注反應。最常見的症狀有惡寒、頭痛、噁心、發熱、潮紅及疲勞。嚴重的輸注反應並不常見。
- 已有過敏反應之案例報告。假如嚴重過敏或過敏型反應發生，應迅速停止注射 Replagal，並應立即給予適當的處理。
- 所有蛋白質藥品製劑，病人可能會產生對抗此蛋白質之抗體。
- 大範圍的腎臟損傷由於有潛在不可逆的病理變化，可能限制酵素取代療法在腎臟的療效反應。
- 本藥品每瓶含有 14.2 毫克鈉，等同於 WHO 建議最高每日劑量 2 公克鈉的 0.7%。

藥物交互作用：Replagal 不可與 chloroquine、amiodarone、benoquin 或 gentamicin 等藥物一起使用，它們可能會抑制細胞內 α -galactosidase 的活性。

特定的不良反應：在 Fabry disease 病人中，可能包括與心臟結構有關之臨床事件：心律不整 (心房顫動、心室期外收縮、頻脈心律不整)、心肌缺氧、心臟衰竭。最常見的輸注相關反應都屬輕微，包括：寒顫、發熱、(臉) 潮紅、頭痛、噁心、呼吸困難、震顫、瘙癢。輸注相關症狀也可能包括：眩暈、多汗、低血壓、咳嗽、嘔吐、疲累。

曾有過敏反應(包括過敏性反應)之案例報告。

<詳細內容請參閱本品核定仿單> Ref: EU202011TW01

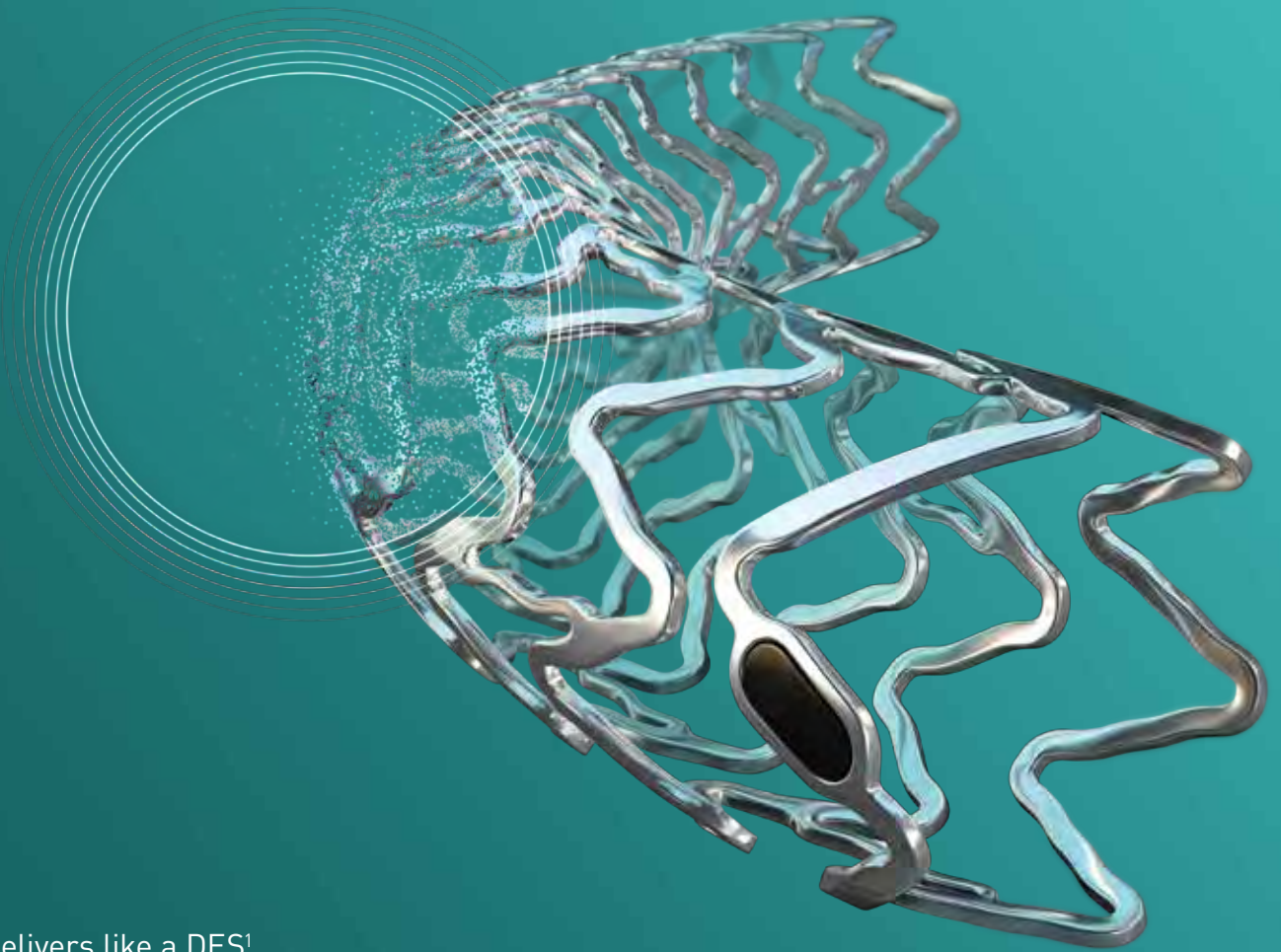
References:

1. REPLAGAL EU Summary of Product Characteristics, January 2018. 2. Bekri S. Importance of glycosylation in enzyme replacement therapy. In: Mehta A, et al. editors. Fabry disease: perspectives from 5 years of FOS. Oxford: Oxford PharmaGenesis Ltd. 2006. Chapter 5. 3. Schiffmann R, et al. Nephrol Dial Transplant. 2006;21(2):345-354.

Vascular Intervention // Coronary
Resorbable Magnesium Scaffold (RMS)

Freesolve™

Metallic Performance. Fully Resorbable.



Delivers like a DES¹



Optimal vessel support^{2,3}



Magnesium fully resorbed after 12 months⁴



Excellent safety and efficacy^{5,6}

1. BIOTRONIK data on file, IIB Benchtest data: Freesolve in comparison to BIOTRONIK Orsiro Mission and Abbott Xience Sierra; 2. Based on pre-clinical data, Seguchi, M. et al., EuroIntervention 2023; 18-online publish-ahead-of-print January 2023; 3. BIOTRONIK data on file, in comparison to predecessor device; 4. Based on intravascular OCT analysis of the BIOMAG-1 trial presented by Dr. M. Seguchi at ESC 2023; 5. Haude M. et al., the Lancet eClinicalMedicine 2023;39: 101740; 6. Haude, M. et al., EuroIntervention 2023;19:1-1 published online May 2023.

Freesolve is a trademark or registered trademark of the BIOTRONIK Group of Companies.

INNOVATION IN CARDIOVASCULAR CARE

Advancing Interventions with Cutting-Edge Technology.

BIOFREEDGM
ultra



BIOMATRIX- α
alpha



Vesscrack
Coronary IVL Balloon



SELUTION SLR
Drug-Eluting Balloon



ThorCrack
Peripheral IVL Balloon



TRUEVISION™ & VIVOHEART™
Intravascular Ultrasound System



BIOSENSORS
INTERNATIONAL™



高仕生技有限公司
Growth Biotech Co., Ltd.

LEPU MEDICAL



赫達亞醫療器材有限公司
Hrdaya Medical Co., Ltd.



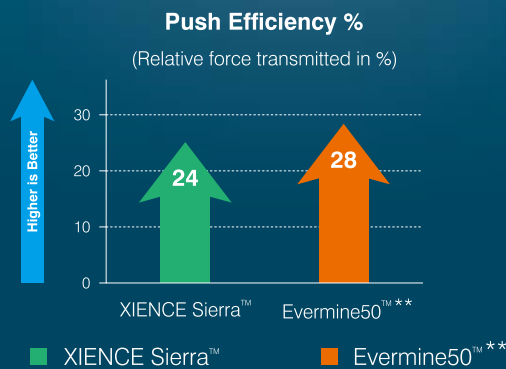
Evermine50TM

Everolimus Eluting Coronary Stent System

*Designed to Deliver,
Designed to Heal*

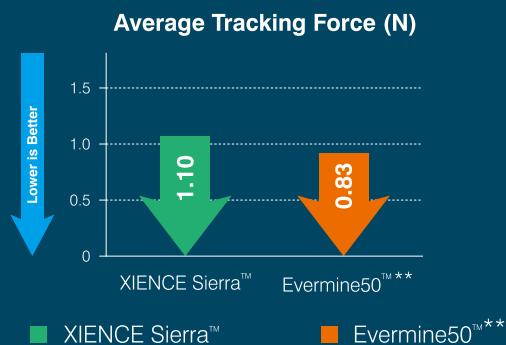


Better Pushability from hub-to-tip*



15%
Better Push Efficiency vs. XIENCE SierraTM

Better trackability in difficult anatomies*



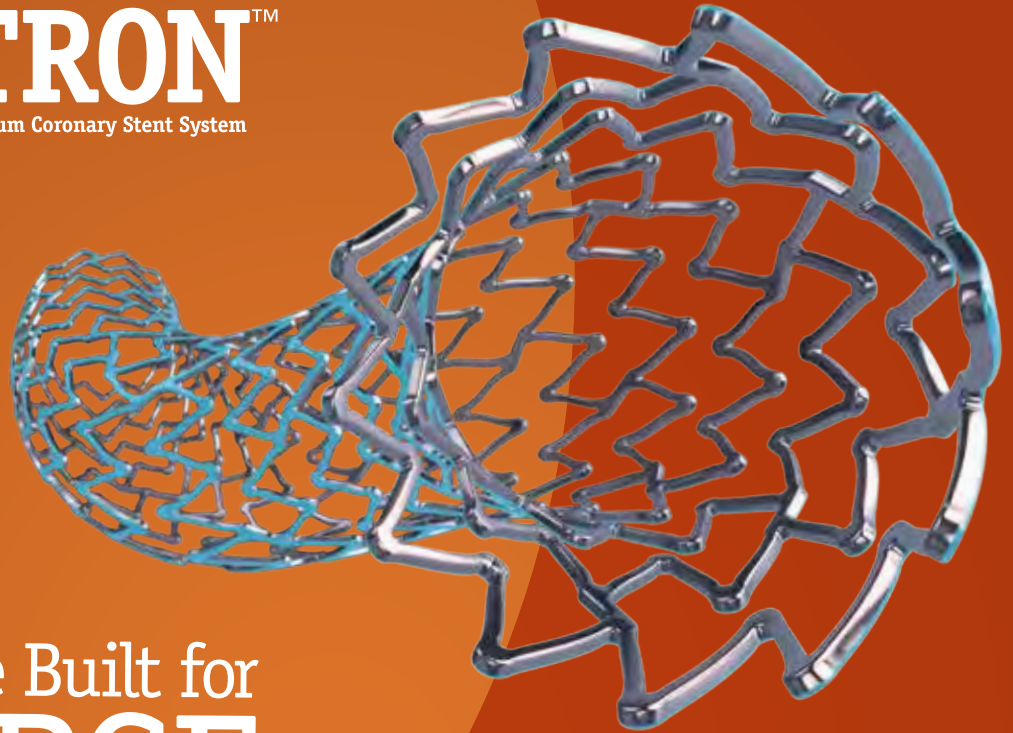
25%
Lesser Average Tracking force vs. XIENCE SierraTM

* Tests performed by and data on file at Meril Life Sciences Pvt. Ltd.
** On Lineage delivery system
XIENCE SierraTM is a trademark of Abbott Laboratories.



SYNERGY MEGATRON™

Everolimus-Eluting Platinum Chromium Coronary Stent System



Purpose Built for
LARGE
Proximal Vessels
Mega Strength, Optimal Healing.

Introducing a new type of stent: **SYNERGY MEGATRON** is purpose built for large proximal vessels. Available in 3.5 mm–5.0 mm diameters to maximize performance where it is needed most.

Innovative New Stent Architecture

- Best-in-Class Strength
- Unmatched Overexpansion
- Maximum Visibility
- Uniform Lesion Scaffolding

Trusted
Bioabsorbable Polymer

- Early Healing
- Consistently Low ST Rates
- Shortened DAPT Data
- Proven Long-Term Outcomes

SYNERGY™ XD

Everolimus-Eluting Platinum Chromium
Coronary Stent System



 **Delivering More.**
Xtra Deliverability. Optimal Healing.

CAUTION: The law restricts these devices to sale by or on the order of a physician. Indications, contraindications, warnings, and instructions for use can be found in the product labelling supplied with each device or at www.IFU-BSCI.com. Products shown for INFORMATION purposes only and may not be approved or for sale in certain countries. This material not intended for use in France. 2023 Copyright © Boston Scientific Corporation or its affiliates. All rights reserved.

荷商波士頓科技有限公司台灣分公司
衛部醫器輸字第027006號
北市衛器廣字第112090262號
IC-1686901-AA-Synergy XD AD-Final



全球視野, 精準護心: AMI 治療的創新與未來

Global Horizons in AMI: Innovation, Precision, and the Future of Care



台灣心肌梗塞學會
Taiwan Myocardial Infarction Society



SCAI
Society for Cardiovascular
Angiography & Interventions